

The Cheshire Cat Gravitational Lens: The Formation of a Massive  
Fossil Group

Jimmy A. Irwin – University of Alabama

et al.

Deposited 09/10/2018

Citation of published version:

Irwin, J., et al. (2015): The Cheshire Cat Gravitational Lens: The Formation of a Massive Fossil Group. *The Astrophysical Journal*, 806(2). <http://dx.doi.org/10.1088/0004-637X/806/2/268>

## THE CHESHIRE CAT GRAVITATIONAL LENS: THE FORMATION OF A MASSIVE FOSSIL GROUP

JIMMY A. IRWIN<sup>1</sup>, RENATO DUPKE<sup>1,2,3,4</sup>, ELEAZAR R. CARRASCO<sup>5</sup>, W. PETER MAKSYM<sup>1</sup>, LUCAS JOHNSON<sup>1</sup>, AND RAYMOND E. WHITE III<sup>1</sup><sup>1</sup> Department of Physics and Astronomy, University of Alabama, Box 870324, Tuscaloosa, AL 35487, USA; jairwin@ua.edu<sup>2</sup> Department of Astronomy, University of Michigan, 500 Church St., Ann Arbor, MI 48109, USA<sup>3</sup> Observatório Nacional, Rua Gal. José Cristino 77, São Cristóvão, CEP20921-400 Rio de Janeiro RJ, Brazil<sup>4</sup> Eureka Scientific Inc., 2452 Delmer St. Suite 100, Oakland, CA 94602, USA<sup>5</sup> Gemini Observatory/AURA, Southern Operations Center, AURA, Casilla 603, La Serena, Chile

Received 2014 July 4; accepted 2015 April 28; published 2015 June 23

## ABSTRACT

The Cheshire Cat is a relatively poor group of galaxies dominated by two luminous elliptical galaxies surrounded by at least four arcs from gravitationally lensed background galaxies that give the system a humorous appearance. Our combined optical/X-ray study of this system reveals that it is experiencing a line of sight merger between two groups with a roughly equal mass ratio with a relative velocity of  $\sim 1350 \text{ km s}^{-1}$ . One group was most likely a low-mass fossil group, while the other group would have almost fit the classical definition of a fossil group. The collision manifests itself in a bimodal galaxy velocity distribution, an elevated central X-ray temperature and luminosity indicative of a shock, and gravitational arc centers that do not coincide with either large elliptical galaxy. One of the luminous elliptical galaxies has a double nucleus embedded off-center in the stellar halo. The luminous ellipticals should merge in less than a Gyr, after which observers will see a massive  $1.2\text{--}1.5 \times 10^{14} M_{\odot}$  fossil group with an  $M_r = -24.0$  brightest group galaxy at its center. Thus, the Cheshire Cat offers us the first opportunity to study a fossil group progenitor. We discuss the limitations of the classical definition of a fossil group in terms of magnitude gaps between the member galaxies. We also suggest that if the merging of fossil (or near-fossil) groups is a common avenue for creating present-day fossil groups, the time lag between the final galactic merging of the system and the onset of cooling in the shock-heated core could account for the observed lack of well-developed cool cores in some fossil groups.

*Key words:* galaxies: clusters: individual (SDSS J1038+4849) – gravitational lensing: strong – X-rays: galaxies: clusters

## 1. INTRODUCTION

Strong gravitational lensing of background galaxies by foreground groups or clusters of galaxies is a powerful tool for determining the mass of the intervening system. Unlike other mass determination methods that require the assumption of hydrostatic equilibrium of the cluster gas or dynamical assumptions about the constituent galaxies, the lensing method is insensitive to the dynamical state of the lensing matter, and is dependent only on the amount of mass between the source and the observer. In general, lensing mass estimates agree reasonably well with the hydrostatic equilibrium method, at least for relaxed clusters (e.g., Wu 2000; Rzepecki et al. 2007; Halkola et al. 2008). Although X-ray/lensing joint analyses have been used mostly for massive clusters, for which the lensing signal is stronger, its application for groups of galaxies has become more robust (e.g., Grant et al. 2004; Fassnacht et al. 2008), providing a new window to study group dynamics.

As the strength of lensing depends on the mass concentration of the lens, lens searches should be most adept at finding lensing systems which, at a given mass, have the highest mass concentrations, such as fossil groups of galaxies. Fossil groups are classically defined as systems dominated by a single giant elliptical galaxy for which there is at least a two magnitude difference between that galaxy and the second rank galaxy (in  $r$ -band) within  $0.5 r_{200}$  (where  $r_{200}$  approximates the virial radius where the average mass density inside this radius is 200 times the critical density of the universe), and are bright sources of extended X-ray emission ( $L_{X,\text{bol}} > 10^{42} h_{50}^{-2} \text{ erg s}^{-1}$ ; Jones et al. 2003). Given the lack of bright galaxies other than

the central brightest group galaxy (BGG), the correlation found between concentration and formation epoch in  $N$ -body simulations (Wechsler et al. 2002), and the fact that fossil groups seem to have higher central mass concentrations than non-fossil groups (e.g., Khosroshahi et al. 2007; c.f., Sun et al. 2009), it was suggested that fossil groups formed earlier than normal groups, with most of the larger galaxies merging into a single central dominant elliptical galaxy, with the system then remaining undisturbed for a very long time until the present day (Ponman et al. 1994; Vikhlinin et al. 1999; Jones et al. 2000). In this picture, age and a lack of subsequent interaction with another group would be the key differences between a fossil group and a normal group.

However, more recently, X-ray and optical measurements of fossil groups have shown several potential inconsistencies with this formation mechanism. Fossil groups appear to resemble clusters of galaxies more closely than groups of galaxies despite their low galaxy count (e.g., Proctor et al. 2011). The most massive fossil groups have a hot intergalactic medium similar to that of clusters, sometimes in excess of 4 keV (e.g., Khosroshahi et al. 2006). Measurements of galaxy velocity dispersions in fossil groups (Cypriano et al. 2006; Mendes de Oliveira et al. 2006; Miller et al. 2012) seem to be consistent with the measured  $T_X$ , at least for the few fossil groups with relatively good X-ray data. This is further suggested by their (not atypical) location in the  $L_X\text{--}T_X$  relation (e.g., Khosroshahi et al. 2007; Miller et al. 2012). This would suggest that they have relatively deep gravitational potential wells typical of clusters, and not normal groups. Other studies, however, have not found substantial differences in the X-ray and optical

scaling relations of fossil groups and normal groups (Sun et al. 2009; Voevodkin et al. 2010; Harrison et al. 2012; Girardi et al. 2014). A further inconsistency is that despite having high measured mass concentrations which would indicate early formation epochs, fossil groups in general do not have well-developed cool cores as would be expected from an old system with a cooling time less than the Hubble time (Khosroshahi et al. 2004, 2006; Sun et al. 2004). Conversely, non-fossil groups often do exhibit cool cores (Finoguenov & Ponman 1999).

Cosmological simulations indicate that the fossil stage of a group might be transitory in nature over the lifetime of the group.  $N$ -body simulations of a cube 80 Mpc on a side by von Benda-Beckmann et al. (2008) showed that nearly half of the simulated fossil groups identified at  $z = 0$  would not be identified as such at  $z = 0.3$ , and virtually none would be identified as fossil groups at  $z = 0.93$ . Conversely, few of the fossil groups identified at  $z = 0.93$  remained fossil groups until  $z = 0$ , with subsequent infall of one or more luminous galaxies after  $z = 0.93$  removing the group from fossil group status by dropping the magnitude gap between the first and second rank galaxies below 2.0. In addition, Dariush et al. (2010) find that 90% of fossil groups identified in simulations by magnitude gap arguments become non-fossil groups after  $\sim 4$  Gyr as a result of infall of luminous galaxies. Thus, it is not clear whether fossil groups truly have a different formation mechanism from normal groups. On one hand, their observed galaxy luminosity distributions are distinct from non-fossil groups; on the other hand the fossil group status of a group seems rather easy to alter with simply the infall of a single luminous galaxy, a process that apparently occurs frequently according to simulations.

In this paper, we use the strongly lensed Cheshire Cat galaxy group to better understand how groups pass in and out of the fossil group stage via merging. We assume a cosmology of  $H_0 = 70 \text{ km s}^{-1} \text{ Mpc}^{-1}$ ,  $\Omega_M = 0.27$ , and  $\Omega_\Lambda = 0.73$ , so that at the group redshift of  $z = 0.431$ ,  $1'' = 5.67 \text{ kpc}$ . All our masses and radii are given in units of  $(h/h_{70})^{-1}$ , while all our equations specifically state the  $h_{70}^{-1}$  dependence. We discuss the properties of the group in Section 2. We describe the *Gemini* GMOS, *Chandra*, and *Hubble Space Telescope* (*HST*) data preparation and analysis in Sections 3, 4, and 5, respectively. We discuss our results in Section 6, and summarize our findings in Section 7.

## 2. THE CHESHIRE CAT GRAVITATIONAL LENS

As mentioned above, groups with high central mass concentrations should make them more efficient strong gravitational lenses, capable of being detected by the Sloan Digital Sky Survey (SDSS). One such very peculiar strong lens system is SDSS J103842.59+484917.7, informally known as the Cheshire Cat (Carroll 1865) Lens. The Cheshire Cat Lens was discovered by the Cambridge Sloan Survey of Wide Arcs in the Sky (Belokurov et al. 2009), and independently by Kubo et al. (2009). The unusual visual nature of the system (Figures 1 and 4) results from four separate background galaxies with redshifts ranging from 0.80 to 2.78 (Bayliss et al. 2011) being lensed by a foreground galaxy group dominated by two closely spaced elliptical galaxies. These two bright elliptical galaxies representing the “eyes” of the Cheshire Cat are SDSS J103843.58+484917.7 and SDSS J103842.68+484920.2 at redshifts  $z = 0.426$  and  $z = 0.433$ , respectively,

surrounded by a collection of much fainter galaxies. Hereafter, we will refer to SDSS J103843.58+484917.7 as the eastern eye and SDSS J103842.68+484920.2 as the western eye. The Einstein radii of the four lensed galaxies range from  $9''0$ – $12''5$  (51–71 kpc). The total projected mass enclosed within the outermost ring is  $3.3 \times 10^{13} M_\odot$  (Belokurov et al. 2009), about a factor of 10 greater than the mass of the Local Group in a volume with a radius only slightly greater than the Milky Way–Large Magellanic Cloud distance. The redshift difference between the two bright eye galaxies corresponds to an  $1800 \text{ km s}^{-1}$  rest-frame velocity difference. We argue below that the two galaxies are at the same distance but with high relative velocity, rather than the redshift difference being due to the Hubble flow. The high relative velocity combined with other merging indicators presented below suggests that the eye galaxies are BGGs of two groups (which we designate “G1” for the eastern eye group, and “G2” for the western eye group) that are in the process of merging in a line of sight collision. Furthermore, our analysis indicates that one group was most likely a fossil group prior to the merger, while the other group was a near-fossil group, and that once these eye galaxies merge, the system will become a massive fossil group. Thus, the Cheshire Cat appears to be a prime example of fossil groups leaving, and eventually re-establishing their fossil group status. Figure 1 shows the spatial distribution of the spectroscopically confirmed galaxies members of the Cheshire Cat group. Open (blue) circles are galaxy members of the G1 group and open (red) squares are the galaxy members of the G2 group. The diamonds (yellow) are the spectroscopically confirmed background and foreground galaxies. Galaxies with no redshift information are marked with a cross (yellow).

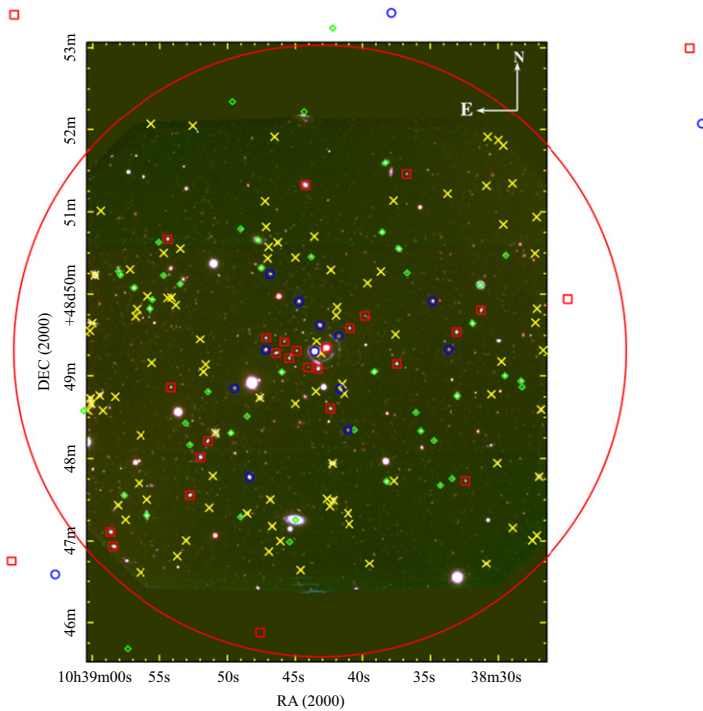
Previous work has studied the galaxy population and strong/weak lensing of the Cheshire Cat and established a virial mass ( $M_{200}$ ) in the range of  $1.0$ – $2.9 \times 10^{14} M_\odot$ ,  $r_{200}$  of 1.5 Mpc, a concentration parameter ( $c_{200}$ ) of 17–34, and a galaxy richness parameter ( $N_{200}$ ) of 25 (all values have been scaled to our adopted cosmology; Bayliss et al. 2011; Oguri et al. 2012; Wiesner et al. 2012). In particular,  $c_{200}$  is quite high compared to other lensed systems studied in Oguri et al. (2012) and Wiesner et al. (2012).

## 3. GEMINI AND IMAGING AND SPECTROSCOPIC DATA ANALYSIS

The optical observations (imaging and spectroscopy) were performed with the *Gemini* Multi-Object Spectrograph (hereafter GMOS; Hook et al. 2004) at the *Gemini* North Telescope in Hawaii, in queue mode, as part of the program GN-2011A-Q-25.

The direct images were recorded through the  $r'$  and  $i'$  filters during the night of 2011 January 4, in dark time, with seeing median values of  $0''.8$  and  $0''.9$  for the  $r'$  and  $i'$  filters, respectively. The night was not photometric. Three 300 s exposures (binned by two in both axes, with pixel scale of  $0''.146$ ) were observed in each filter. Offsets between exposures were used to take into account the gaps between the CCDs (37 un-binned pixels) and for cosmic ray removal. The images were processed with the *Gemini* GMOS package version 1.8 inside IRAF<sup>6</sup>. The images were bias/overscan-subtracted,

<sup>6</sup> IRAF is distributed by NOAO, which is operated by the Association of Universities for Research in Astronomy Inc., under cooperative agreement with the National Science Foundation.



**Figure 1.** GMOS-S pseudo-color image of the Cheshire Cat group. The size of the image is  $\approx 5.4 \times 5.4$  arcmin<sup>2</sup>. Open (blue) circles are galaxy members of the G1 group and the open (red) squares are galaxies that are members of the G2 group. Open (green) diamonds are background and foreground galaxies. Galaxies with no redshift information and with  $r' < 23$  mag and  $r'-i < 0.8$  are represented by the (yellow) crosses. The red circle represents the virial radius of 1.3 Mpc (229").

trimmed and flat-fielded. The final processed images were registered to a common pixel position and then combined. Because the group was observed under non-photometric conditions, we used the values listed in the *Gemini* Performance Monitoring webpage<sup>7</sup> of 28.22 and 28.15 mag for  $r'$  and  $i'$  filters, respectively (values closest to the date of the observations), as an approximate zero point for the photometry.

Object detection and extraction of the photometric parameters were obtained with the program *Source Extractor* (Bertin & Arnouts 1996). The parameter `MAG_AUTO` was adopted as the value for the total magnitude of the objects. Colors were derived by measuring fluxes inside a fixed circular aperture of  $1''.2$  in diameter ( $\sim 8$  pixels) in both filters. Because the images were observed under non-photometric conditions, we have to determine the correction (offset) necessary to apply to the magnitudes due to the effect of the extinction produced by the clouds during the observations. The correction was determined by comparing the magnitudes of well isolated and non-saturated field stars, measured at a fixed circular aperture of  $3''$ , with the magnitudes of the same stars, measured inside the same aperture (the fiber magnitude), from the Sloan Digital Sky Survey Data Release 8. (SDSS DR8)<sup>8</sup> The comparison yielded an offset between the *SExtractor* magnitudes and the SDSS DR8 magnitudes of  $-0.41 \pm 0.07$  mag and  $-0.41 \pm 0.12$  mag for the  $r'$  and  $i'$  filters, respectively. The magnitudes in the final catalog were corrected by these offsets. The final galaxy catalog contains the total magnitudes in  $r'$  and  $i'$ , colors and other structural parameters for 595 objects classified as galaxies, inside an area of  $\sim 5 \times 5$  arcmin<sup>2</sup>. The galaxies were

defined as objects with *SExtractor* *stellarity* flag  $\leq 0.6$  and brighter than  $r' = 24.5$  mag ( $M_{r'} = -17.7$  mag), which is the magnitude where the number counts start to turn over.

All galaxies brighter than  $r' = 22$  mag and with  $r'-i < 0.8$  mag were selected for spectroscopic follow-up (151 galaxies). Two masks were designed for the observations, one with 36 galaxies and another with 39 galaxies ( $\sim 50\%$  of the selected sample). The two masks were observed between 2011 May 23 and 2011 July 01. All spectra were observed during dark time, with median seeing values of  $0''.8$  and under photometric conditions. The spectra were acquired using the R400 grating centered at  $7000 \text{ \AA}$ , in order to maximize the wavelength coverage for galaxies at the cluster distance. For each mask, a total exposure time of 2.5 hr ( $5 \times 1800$  s) was used. Small offsets of  $\sim 50 \text{ \AA}$  in spectral direction toward the blue and/or the red were applied between exposures to avoid any lost or important emission/absorption lines presented in the spectra that could lie in the gaps between the GMOS CCDs. Spectroscopic dome flats and CuAr comparison lamp spectra were taken before or after each science exposure.

The spectra were reduced with the *Gemini* GMOS package, following the standard procedure. The science spectra, dome flats, and comparison lamps were bias-subtracted and trimmed. Spectroscopic dome flats were processed by removing the calibration unit plus GMOS spectral response and the calibration unit uneven illumination, normalizing and leaving only the pixel-to-pixel variations and the fringing. The two-dimensional spectra were then flat-fielded, wavelength calibrated (rms  $\sim 0.15\text{--}0.20 \text{ \AA}$ ), corrected by S-shape distortions, sky-subtracted and extracted to a one-dimensional format using a fixed aperture of  $1''.2$  ( $1.5 \times \text{FWHM}$ ). The final extracted spectra have a resolution of  $\sim 7.5 \text{ \AA}$  at  $\sim 7000 \text{ \AA}$  (measured from the arc lines FWHM) with a

<sup>7</sup> <http://www.gemini.edu/sciops/instruments/performance-monitoring/data-products/gmos-n-and-s/photometric-zero-points>

<sup>8</sup> <http://www.sdss3.org/dr8/>

**Table 1**  
Redshifts and Magnitudes of the Observed Galaxies

ID (1)	R.A. (2)	Decl. (3)	$r'$ (4)	$i'$ (5)	$(r'-i)$ (6)	$z$ (7)	$\Delta(z)$ (8)	$R/\#em. lines$ (9)	Member? (10)
387	10 38 31.884	+48 49 38.75	20.76	20.42	0.40	0.246811	0.000120	... / 7	N
405	10 38 33.036	+48 48 45.68	20.01	19.72	0.33	0.246617	0.000267	3.83/...	N
403	10 38 33.072	+48 49 32.38	21.19	20.51	0.67	0.432056	0.000133	4.79/...	Y/G2
446	10 38 33.648	+48 49 19.02	22.33	21.70	0.59	0.426248	0.000087	7.99/...	Y/G1
532	10 38 34.728	+48 48 13.10	22.54	21.74	0.78	0.802925	0.000110	... / 2	N
535	10 38 34.836	+48 49 54.95	21.60	20.90	0.66	0.429267	0.000177	4.52/...	Y/G1
590	10 38 35.700	+48 48 20.09	21.77	21.36	0.38	0.470159	0.000083	... / 6	N
611	10 38 36.060	+48 48 33.55	22.45	21.75	0.73	0.512468	0.000077	8.97/...	N
654	10 38 36.708	+48 50 15.54	22.83	22.39	0.40	0.601393	0.000267	3.77/...	N
679	10 38 37.320	+48 50 33.11	20.37	20.05	0.39	0.247048	0.000267	4.89/...	N
702	10 38 37.464	+48 49 08.69	21.45	20.80	0.64	0.430621	0.000100	9.56/...	Y/G2
694	10 38 38.220	+48 47 43.33	20.36	19.81	0.57	0.441562	0.000267	5.16/...	N
764	10 38 38.544	+48 50 45.20	20.37	20.04	0.34	0.321436	0.000267	4.95/...	N
788	10 38 39.120	+48 49 02.96	20.15	19.73	0.42	0.239652	0.000043	... / 8	N
830	10 38 39.804	+48 49 44.22	22.76	22.12	0.58	0.433140	0.000153	5.20/...	Y/G2
893	10 38 40.596	+48 48 20.95	22.63	22.03	0.59	0.661674	0.000254	... / 4	N
905	10 38 40.956	+48 49 35.26	21.92	21.30	0.64	0.431102	0.000103	11.46/...	Y/G2
894	10 38 41.100	+48 48 20.81	22.19	21.55	0.60	0.426418	0.000267	8.50 4	Y/G1
952	10 38 41.712	+48 48 50.72	21.92	21.26	0.66	0.426842	0.000063	11.40/...	Y/G1
970	10 38 41.820	+48 49 29.53	22.30	21.67	0.59	0.426719	0.000143	8.23/...	Y/G1
1006	10 38 42.432	+48 48 36.36	21.57	20.90	0.66	0.433954	0.000087	12.14/...	Y/G2
1092	10 38 42.720	+48 49 20.28	19.15	18.49	0.68	0.432519	0.000157	8.45/...	Y/ G2 (W)
1012	10 38 43.188	+48 49 37.45	21.27	20.64	0.65	0.428253	0.000160	9.02/...	Y/G1
983	10 38 43.332	+48 49 05.12	20.98	20.25	0.71	0.433964	0.000130	8.15/...	Y/G2
972	10 38 43.584	+48 49 17.83	18.86	18.21	0.67	0.425845	0.000140	8.56/...	Y/G1 (E)
1090	10 38 43.836	+48 50 27.13	22.04	21.34	0.72	0.552115	0.000267	4.84/...	N
1224 (B1)	10 38 44.068	+48 49 06.11	23.28	22.67	0.61	0.433700	0.000600	...	Y/G2
1124	10 38 44.736	+48 49 54.70	21.49	20.87	0.64	0.428783	0.000093	12.40/...	Y/G1
1164	10 38 44.916	+48 49 18.12	22.53	21.94	0.62	0.430498	0.000093	8.92/...	Y/G2
1195	10 38 45.456	+48 49 12.79	21.96	21.30	0.67	0.433063	0.000100	9.66/...	Y/G2
1222	10 38 45.816	+48 49 24.96	22.56	21.94	0.66	0.433743	0.000127	7.33/...	Y/G2
1230	10 38 45.996	+48 49 02.64	20.24	19.94	0.33	0.378415	0.000050	... / 7	N
1265	10 38 46.428	+48 49 16.64	21.51	20.82	0.66	0.431549	0.000110	8.06/...	Y/G2
1305	10 38 46.860	+48 50 14.68	22.01	21.38	0.59	0.429240	0.000173	5.60/...	Y/G1
1329	10 38 47.148	+48 49 28.09	22.07	21.38	0.66	0.434998	0.000147	7.09/...	Y/G2
1331	10 38 47.184	+48 49 18.91	21.50	20.85	0.61	0.427146	0.000093	9.43/...	Y/G1
1340	10 38 47.508	+48 50 19.14	20.59	20.12	0.57	0.461146	0.000180	7.29/...	N
1362	10 38 47.760	+48 50 39.52	19.26	18.68	0.59	0.471193	0.000140	6.88/...	N
1393	10 38 48.372	+48 47 46.46	20.86	20.27	0.61	0.429957	0.000123	8.83/...	Y/G1
1406	10 38 48.552	+48 48 30.85	22.21	21.59	0.68	0.835114	0.000190	... / 2	N
1438	10 38 49.020	+48 50 47.62	22.27	21.86	0.47	0.445005	0.000163	5.90/...	N
1435 (B2)	10 38 49.469	+48 48 51.24	21.89	21.43	0.56	0.426500	0.000600	...	Y/G1
1454	10 38 49.740	+48 48 18.65	20.21	19.82	0.37	0.472110	0.000193	8.09/...	N
1576	10 38 51.432	+48 48 12.78	21.57	21.00	0.59	0.433917	0.000270	2.30/...	Y/G2
1605	10 38 51.432	+48 48 48.74	22.66	22.01	0.61	0.212771	0.000113	6.34/...	N
1544	10 38 51.972	+48 48 00.94	20.94	20.67	0.39	0.434270	0.000063	... / 4	Y/G2
1696	10 38 53.088	+48 48 25.81	22.89	22.37	0.33	0.791988	0.000140	... / 4	Nd
1792	10 38 54.168	+48 48 51.84	22.27	21.66	0.60	0.432626	0.000150	5.88/...	Y/G2
B3	10 38 24.822	+48 49 56.384	...	...	...	0.43048	0.00016	...	Y/G2
2043	10 38 28.248	+48 48 51.98	22.70	22.21	0.40	0.260293	0.000157	... / 2	N
2049	10 38 28.320	+48 48 56.23	21.83	21.12	0.70	0.470996	0.000103	9.13/...	N
2080	10 38 29.436	+48 50 28.32	22.57	21.68	0.69	0.890203	0.000077	... / 4	N
2107	10 38 29.508	+48 48 59.90	21.57	21.19	0.35	0.420291	0.000200	... / 6	N
1356	10 38 31.272	+48 49 48.32	21.51	20.95	0.59	0.430565	0.000123	6.64/...	Y/G2
2184	10 38 31.308	+48 50 06.68	19.18	18.86	0.40	0.208317	0.000267	7.29/...	N
381	10 38 32.424	+48 47 43.87	22.34	21.80	0.54	0.431942	0.000137	5.63/...	Y/G2
450	10 38 33.396	+48 47 45.42	22.81	22.34	0.49	0.419921	0.000203	2.84/...	N
517	10 38 34.260	+48 47 40.49	22.37	21.86	0.47	0.472610	0.000107	... / 6	N
644	10 38 36.744	+48 51 27.58	22.47	21.95	0.55	0.433904	0.000160	4.31/...	Y/G2
778	10 38 38.292	+48 51 35.71	20.24	19.76	0.49	0.360463	0.000060	... / 7	N
1096	10 38 44.268	+48 51 19.51	20.19	19.69	0.61	0.431825	0.000140	6.30/...	Y/G2
B4	10 38 44.357	+48 52 13.602	...	...	...	0.11716	0.00050	...	N

**Table 1**  
(Continued)

ID	R.A.	Decl.	$r'$	$i'$	$(r'-i)$	$z$	$\Delta(z)$	$R/\#$ em. lines	Member?
(1)	(2)	(3)	(4)	(5)	(6)	(7)	(8)	(9)	(10)
1112 (B5)	10 38 44.990	+48 47 15.43	17.47	17.01	0.48	0.176120	0.000500	...	N
1181	10 38 45.420	+48 46 59.34	22.84	22.08	0.34	0.493398	0.000050	... / 4	N
B6	10 38 47.589	+48 45 52.831	...	...	...	0.43289	0.00034	...	Y/G2
1385	10 38 49.020	+48 47 17.56	21.82	21.28	0.67	0.451399	0.000167	6.49/...	N
B7	10 38 49.644	+48 52 20.771	...	...	...	0.44164	0.00006	...	N
1674	10 38 52.764	+48 48 10.04	22.34	21.68	0.58	0.994848	0.000180	... / 2	N
1681	10 38 52.764	+48 47 33.43	21.23	20.59	0.62	0.433710	0.000083	11.96/...	Y/G2
1711	10 38 53.484	+48 50 07.44	21.60	21.06	0.52	0.530524	0.000267	4.68/...	N
1787	10 38 54.420	+48 50 40.09	21.29	20.63	0.68	0.434060	0.000077	12.58/...	Y/G2
1782	10 38 54.708	+48 50 13.63	22.69	21.90	0.72	0.891784	0.000127	... / 2	N
1847	10 38 55.068	+48 50 37.82	22.66	22.24	0.63	0.892748	0.000077	... / 4	N
253	10 38 55.536	+48 49 56.10	21.61	20.76	0.80	0.542742	0.000093	12.37/...	N
228	10 38 55.716	+48 49 49.40	20.89	20.40	0.42	0.239949	0.000017	... / 8	N
208	10 38 55.932	+48 47 18.71	19.85	19.39	0.49	0.190752	0.000294	2.75/...	N
100	10 38 56.940	+48 50 04.63	20.30	19.99	0.34	0.296108	0.000083	... / 8	N
63	10 38 57.660	+48 47 33.32	21.10	20.43	0.75	0.416682	0.000130	4.56/...	N
1	10 38 57.948	+48 50 13.99	21.42	20.70	0.78	0.502117	0.000287	7.91/...	N
102	10 38 58.092	+48 50 16.62	22.35	21.59	0.75	0.502978	0.000247	3.06/...	N
72	10 38 58.488	+48 46 56.06	20.46	19.79	0.73	0.435771	0.000103	9.05/...	Y/G2
2	10 38 58.668	+48 47 06.58	20.89	20.22	0.66	0.435345	0.000223	5.02/...	Y/G2
B8	10 39 00.638	+48 48 34.769	...	...	...	0.20626	0.00050	...	N
B9	10 38 14.912	+48 52 04.017	...	...	...	0.42786	0.00013	...	Y/G1
B10	10 38 15.809	+48 52 59.636	...	...	...	0.43042	0.00013	...	Y/G2
B11	10 38 25.802	+48 44 42.486	...	...	...	0.08975	0.00050	...	N
B12	10 38 37.863	+48 53 25.550	...	...	...	0.42949	0.00009	...	Y/G1
B13	10 38 42.254	+48 53 14.399	...	...	...	0.11697	0.00050	...	N
B14	10 38 44.615	+48 54 15.524	...	...	...	0.42546	0.00022	...	Y/G1
B15	10 38 57.378	+48 45 40.897	...	...	...	0.37074	0.00010	...	N
B16	10 39 02.732	+48 46 35.045	...	...	...	0.42704	0.00016	...	Y/G1
B17	10 39 05.797	+48 53 24.039	...	...	...	0.43186	0.00016	...	Y/G2
B18	10 39 05.940	+48 46 45.029	...	...	...	0.43386	0.00011	...	Y/G2
B19	10 39 07.866	+48 48 09.185	...	...	...	0.40277	0.00009	...	N
B20	10 39 09.609	+48 49 59.268	...	...	...	0.42759	0.00011	...	Y/G1
B21	10 39 10.594	+48 50 23.643	...	...	...	0.42996	0.00012	...	Y/G1
B22	10 39 14.033	+48 51 28.229	...	...	...	0.44482	0.00014	...	N
B23	10 39 18.069	+48 48 05.024	...	...	...	0.42894	0.00009	...	Y/G1

**Note.** Galaxies within 0.5  $r_{200}$ , 0.5–1.0  $r_{200}$ , and 1.0–1.5  $r_{200}$  of the X-ray centroid of the Cheshire Cat shown in bold, regular font, and italics, respectively. Column (1): source Extractor Galaxy ID, with B1–B23 from Bayliss et al. (2014); Columns (2), (3): right Ascension and Declination (J2000.0). The units of Right Ascension are hours, minutes and seconds, and the units of Declination are degrees, arcminutes and arcseconds; Columns (4) and (5): total magnitudes in  $r'$  and  $i'$ ; Column (6): Sloan  $r'-i$  color measured inside a fixed aperture of  $1''2$ ; Columns (7) and (8): redshift and the associated error, corrected to the heliocentric system; Column (9): the  $R$  value (Tonry & Davis 1979) and/or the emission lines used to calculate the redshift; Column (10): membership flag: Y/G1—member galaxy of G1, Y/G2—member galaxy of G2, N—background/foreground galaxy.

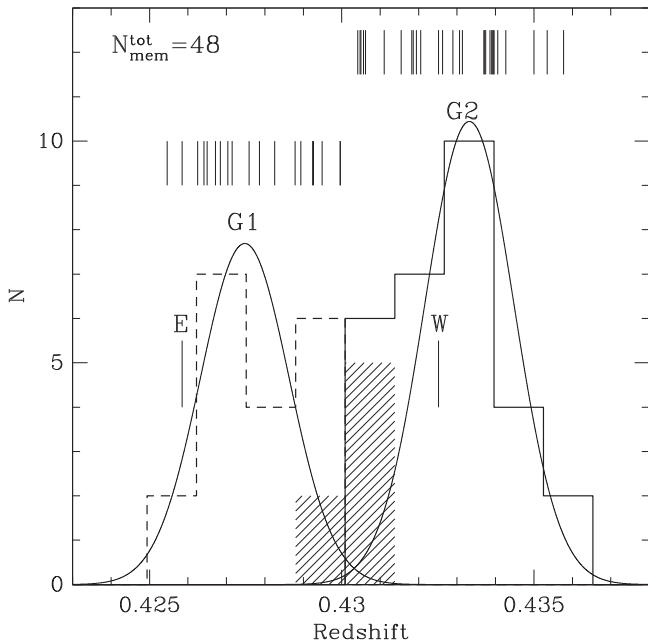
dispersion of  $\sim 1.37 \text{ \AA pixel}^{-1}$ , covering a wavelength interval of  $\sim 4000\text{--}8400 \text{ \AA}$  (the wavelength coverage depends on the position of the slit in the GMOS field of view).

The redshifts of the galaxies were determined using the cross-correlation technique or emission line fitting. For galaxies with clear emission lines, the routine RVIDLINE in the IRAF RV package was used employing a line-by-line Gaussian fit to measure the radial velocity. The residual of the average velocity shifts of all measurements were used to estimate the errors. For early-type galaxies, the observed spectra were cross-correlated with high signal-to-noise templates using the FXCOR program in the RV package inside IRAF. The errors given by FXCOR were estimated using the  $R$  statistic of Tonry & Davis (1979).

We were able to measure the redshift for 75 galaxies (100% success rate) of which 34 had redshifts consistent with the Cheshire Cat. The calculated redshift, corrected to the heliocentric reference frame, the corresponding errors, the

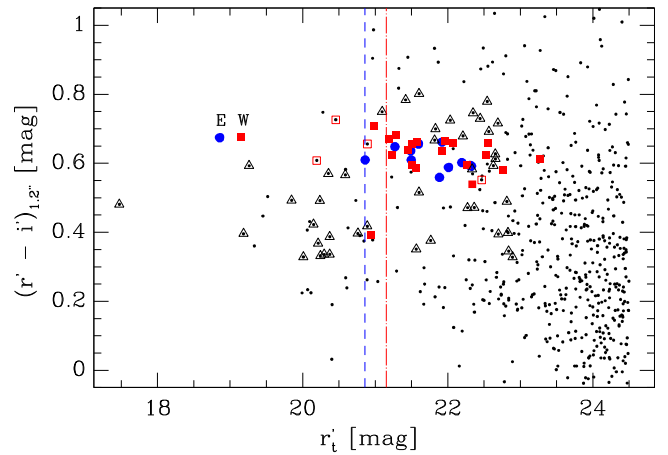
magnitudes and other relevant information are presented in Table 1. To supplement our sample, spectroscopic redshifts of galaxies in the area of the Cheshire Cat from the work of Bayliss et al. (2014) were added to our sample. Based on a spectroscopic sample of 168 galaxies, Bayliss et al. (2014) obtained 23 redshifts within a physical radius of 2.0 Mpc of the center of the group that were not already in our GMOS catalog, of which 14 were identified as Cheshire Cat galaxies. The coordinates, magnitude, and redshift of these 14 additional Cheshire Cat galaxies and nine foreground/background galaxies are shown in Table 1, and labeled as B1–B23.

Combining our group members with those in the Bayliss et al. (2014) sample, there are 48 galaxies in the redshift interval between  $0.424 < z < 0.437$  that we identify as being part of the Cheshire Cat system. Thirty-six of the galaxies are located inside the GMOS field of view, which corresponds to the virial radius of the group of 1.3 Mpc (see below), and 12 are located between 1.0–1.5 virial radii (1.3–2.0 Mpc). We



**Figure 2.** Histogram of the redshift distribution of 48 spectroscopically confirmed galaxies belonging to the Cheshire Cat. Galaxies have been separated into the eastern eye group (G1, 19 galaxies; dashed line) and western eye group (G2, 29 galaxies; solid line). The shaded histogram represents the seven galaxies with posterior probabilities of group memberships between 58% and 62% (2 galaxies in G1 and 5 galaxies in G2; see the text). The smooth curves represent the best fit to a bimodal velocity distribution. The individual galaxy redshifts are shown as vertical lines at the top of the Figure. “E” and “W” represent the redshifts of the eastern and western eye galaxies, respectively.

use only the galaxies inside the virial radius to calculate the virial mass and group richness values, while we use all 48 galaxies to derive the redshift distribution. The redshift distribution of these galaxies is shown in Figure 2. Two prominent peaks are visible in the redshift distribution, suggesting that there could be more than one structure along the line of sight of the group. In order to investigate its structure, we used the KMM test (Ashman et al. 1994), which is appropriate to detect the presence of two or more components in an observational data set. We have considered whether the data is consistent with a single component or not. The results of applying the test in the homoscedastic mode (common covariance) yields strong evidence that the redshift distribution of member galaxies is at least bimodal, rejecting a single Gaussian model at a confidence level of 98.10% ( $P$ -value of 0.019). The  $P$ -value is another way to express the statistical significance of the test, and is the probability that a likelihood test statistic would be at least as large as the observed value if the null hypothesis (one component in this case) were true. Assuming two components, the procedure assigns a mean value of  $z \sim 0.428$  and  $z \sim 0.433$  with 19 (41%) and 29 (59%) galaxies for the structures, respectively (groups we designate G1 and G2 in Figure 2). We used the posterior probability of group membership given by KMM to assign the galaxies to each group. Seventeen out of 19 galaxies in group G1 and 24 out of 29 galaxies in group G2 have a probability  $>80\%$  of being members of these groups. Two of the galaxies in group G1 have a probability  $\sim 63\%$  of being members of this group. In the case of group G2, there are five galaxies with a probability between 58% and 63% of being members of this group. It cannot be ruled out the possibility



**Figure 3.** Color–magnitude diagram of all galaxies detected in the GMOS images with  $r'$  brighter than 24.5 mag (595 galaxies, black dots). Blue circles and red squares are the spectroscopically confirmed members of the G1 and G2 groups respectively, with filled and open symbols representing which of these galaxies lie inside and outside of  $0.5 r_{200}$  of the group. Red short dash and blue long dash vertical lines represent a two magnitude gap from the E and W eye galaxies, respectively. The black triangles represent spectroscopically confirmed background and foreground galaxies, while black dots represent objects without spectroscopic redshifts. The two central galaxies of the groups, SDSS J103843.58+484917.7 and SDSS J103842.68+484920.2 (the “eyes” of the Cheshire Cat) are represented by a letter (E and W) in the CMD.

that these galaxies are part of a smaller group located between G1 and G2 groups or are part of a filament connecting the two structures. The membership flag and galaxy group assignments are given in the last column of Table 1. The seven galaxies with lower probability of being members of groups G1 and G2 are represented by the shaded histogram in Figure 2.

We have used the bi-weight estimator for location and scale (Beers et al. 1990) to calculate the average redshift and the line of sight velocity dispersion of the Cheshire Cat group as a whole. We used an iterative procedure by calculating the location and scale using the Robust Statistics program (Beers et al. 1990) and applying a  $3\sigma$  clipping algorithm to the results. We repeated this procedure until the velocity dispersion converged to a constant value. We calculate an average redshift for the group of  $0.430877 \pm 0.000307$  and a line of sight velocity dispersion of  $\sigma_{\text{los}} = 659 \pm 69 \text{ km s}^{-1}$ . Given this velocity dispersion and using the prescription of Heisler & Bahcall (1985), the virial mass is  $(1.5 \pm 0.2) \times 10^{14} M_{\odot}$ , and the virial radius is  $1.3 \pm 0.1 \text{ Mpc}$ , with uncertainties at the 68% confidence intervals. We do the same thing for G1 and G2 separately, and find average redshifts of  $0.427751 \pm 0.000250$  and  $0.432867 \pm 0.000213$ , respectively, with with line of sight velocity dispersions of  $\sigma_{\text{los}} = 318 \pm 51 \text{ km s}^{-1}$  and  $\sigma_{\text{los}} = 337 \pm 42 \text{ km s}^{-1}$ , respectively (see Figure 2). The two groups are separated by  $\sim 1350 \text{ km s}^{-1}$  in the group rest frame. The virial masses are  $(0.33 \pm 0.07) \times 10^{14} M_{\odot}$  and  $(0.39 \pm 0.06) \times 10^{14} M_{\odot}$ , while the virial radii are  $0.64 \pm 0.07 \text{ Mpc}$  and  $0.69 \pm 0.08 \text{ Mpc}$  for groups G1 and G2, respectively. The velocities of the eastern and western eye galaxies are shown with an “E” and “W,” respectively. Curiously, neither eye is at the center of its respective group in velocity space. The eastern eye is offset to a lower velocity by  $\approx 570 \text{ km s}^{-1}$ , while the western eye is offset by only  $\approx 100 \text{ km s}^{-1}$ .

Figure 3 shows the color–magnitude diagram (CMD) of the 595 galaxies brighter than  $r' = 24.5 \text{ mag}$  (black dots). The

blue circles and the red squares represent the spectroscopically confirmed members of the G1 and G2 groups, respectively. Filled symbols represent galaxies within  $0.5 r_{200}$  of the combined system, while open symbols represent galaxies outside  $0.5 r_{200}$ . In the figure we can see that the red sequence for members of the group shows a moderate scatter in color. We also can see that members of the G1 group are slightly bluer than the members of the G2 group. There is a two magnitude gap in  $r'$  between the G1 central galaxy (galaxy “E”; ID 972) and the next brightest confirmed G1 galaxy (ID 1393) within  $0.5 r_{200}$  (0.32 Mpc) of the G1 center. We note that there are two galaxies within this radius that are within two magnitudes in  $r'$  of galaxy “E” for which we do not have a spectroscopic redshift. However, one is blue in color ( $r' - i' < 0.5$ ). Of the 24 galaxies with spectroscopic redshifts that have colors this blue, only one galaxy is a member of either G1 or G2. Thus, it is statistically unlikely that this galaxy actually belongs to the Cheshire Cat. The other galaxy is red, but has an SDSS-determined photometric measurement that is  $>3\sigma$  larger than the redshift of the Cheshire Cat. So G1 was likely a fossil group before its collision with G2, although further optical spectroscopy will be needed for these galaxies. Similar arguments lead to a gap of 1.83 magnitude for the G2 central galaxy (“W”; ID 1092) and the second rank galaxy within  $0.5 r_{200}$  (0.35 Mpc) of the G2 center (ID 983), indicating G2 might have been a near-fossil group before collision with G1. The two magnitude gap between the first- and second-ranked galaxies in a group ( $\Delta m_{12}$ ) is not the only criterion that has been used to identify fossil groups. Dariush et al. (2010) suggest a 2.5 magnitude gap between the first- and fourth-ranked galaxies ( $\Delta m_{14} > 2.5$ ) as an alternative means of identifying early-formed systems. With this definition, G1 was a fossil group unless both galaxies without spectroscopic redshifts mentioned above are G1 members. G2 would once again be a near-fossil group with  $\Delta m_{14} = 1.83$  at worst, or  $\Delta m_{14} = 2.36$  if the galaxies without spectroscopic redshifts are ignored<sup>9</sup> This will become relevant in Section 6.3 when we discuss the past and future of the Cheshire Cat system once this suspected merger is complete.

We can use our CMD to estimate  $N_{200}$ , the number of red ridge galaxies brighter than  $0.4 L^*$  that are within a radius of  $r_{200}$ . For the Cheshire Cat,  $0.4 L^*$  corresponds to an apparent  $i'$  magnitude of 20.84 (Wiesner et al. 2012). Using Sloan and WIYN data, Wiesner et al. (2012) estimate that  $N_{200} = 25$  for the Cheshire Cat based on broadband optical colors. Our *Gemini* GMOS imaging covers most of a 1.3 Mpc radius circle around the group, except for small regions to the extreme north and south of the 1.3 Mpc circle. Thus, we are able to image nearly every red ridge galaxy within  $r_{200}$ . From our spectroscopic data, we confirm 20 red ridge galaxies in the Cheshire Cat within 1.3 Mpc whose  $i'$  magnitude in the Sloan Catalog (*not* in our catalog, since  $N_{200}$  was calibrated for SDSS magnitudes) is brighter than 20.84. From Figure 3, there are a few galaxies that lie in the domain of the brighter red ridge group members that do not have redshift measurements. Given the purity of the red ridge sample in this area, it is likely that 2–3 of these galaxies belong to the Cheshire Cat and should be

counted in the  $N_{200}$  determination. An additional bright red ridge galaxy might be expected statistically in the small portion of the 1.3 Mpc circle that is not covered by our observations to the north and to the south of the group. Thus, there are most likely 23–24 red ridge galaxies brighter than  $i' = 20.84$  within 1.3 Mpc, consistent with Wiesner et al. (2012). Separating the bright red ridge galaxies into either the G1 or G2 groups within their respective  $r_{200}$  determined above, we estimate  $N_{200,G1} = 7$  and  $N_{200,G2} = 13$ .

#### 4. CHANDRA X-RAY DATA ANALYSIS

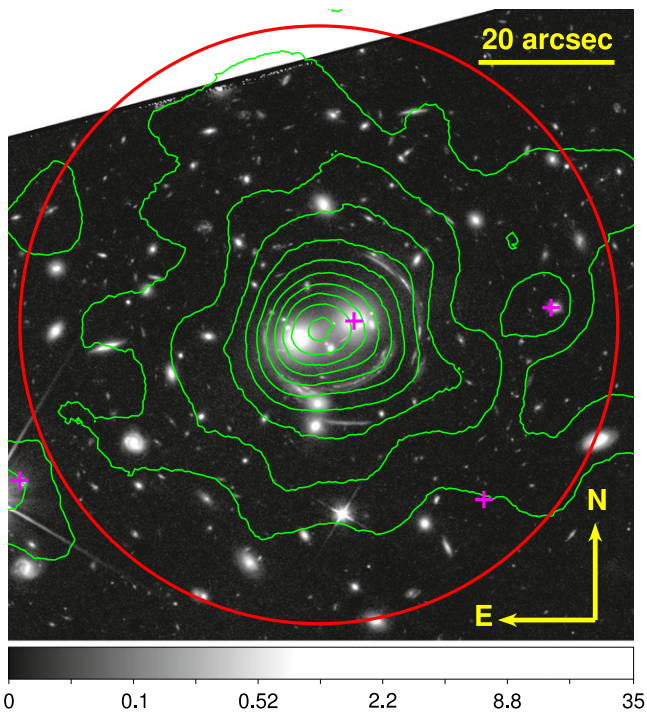
Previously unobserved in X-rays, *Chandra* ACIS-S observations (ObsID 11756 and 12098) for a combined 70.2 ks exposure were obtained on 2010 January 24 and 2010 February 1 for the Cheshire Cat. The data sets were processed beginning with the level 1 event file in a uniform manner following the *Chandra* data reduction threads employing CIAO 4.5 coupled with CALDB 4.5.7. Events with grades of 0, 2, 3, 4, and 6 were selected for all subsequent processing and analysis. The observation specific bad pixel files were applied from the standard calibration library included with CALDB 4.5.7.

There were no times of excessively high background, so the entire 70.2 ks observation time was utilized. The two individual observations were merged using the CIAO tool `reproject_obs` for the spatial analysis. X-ray point sources were detected using `wavdetect` and verified by eye. For spatial work, the surface brightness was extracted using *SHERPA* in annular rings centered on the peak of X-ray emission. Background was selected from a hot gas-free and point source-subtracted annular region centered on the peak of emission with an extent of  $120''$ – $150''$ . For spectral work, we used `specextract` to extract spectra and generate RMF and ARF files for each observation separately, and then combine them into one spectrum by appropriately weighting the two RMFs and ARFs. Spectra were fit within XSPECv12.8 using an `apec` thermal model with Galactic absorption (using `tbabs` and a value of  $N_H = 1.35 \times 10^{20} \text{ cm}^{-2}$ ; Dickey & Lockman 1990) using  $\chi^2$  statistics with energy channels grouped such that each energy bin contained at least 25 photons. The abundance table from Grevesse & Sauval (1998) was adopted. Background was selected from the same region used in the spatial analysis. Spectra were fit in the 0.5–7.0 keV energy range.

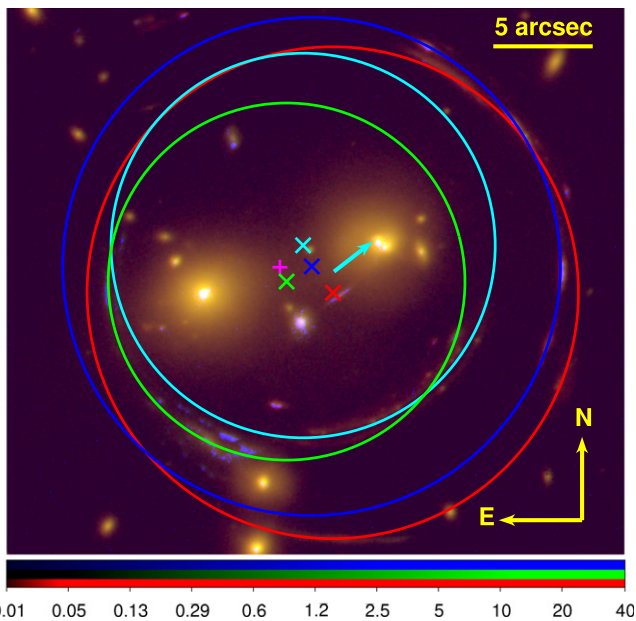
The adaptively smoothed 0.3–7.0 keV X-ray contours are shown plotted over the *HST* image in Figure 4. Diffuse X-ray emission is detected coincident with the group with a centroid of  $(\alpha, \delta) = (10^{\text{h}}38^{\text{m}}43^{\text{s}}.196, +48^{\circ}49'19''.09)$ . By computing the X-ray centroid on a variety of spatial scales from  $5''$  to  $60''$  and noting the spread in center values, we estimate the uncertainty of the X-ray centroid to be  $2''$ . The centroid is not located at the position of either eye, but approximately half-way between the eyes (see Figure 5). A bright X-ray point source is coincident with the western eye with a luminosity of  $L_X = 1 \times 10^{43} \text{ erg s}^{-1}$  (0.3–10 keV) assuming it is at the same redshift as the eye. The background-subtracted X-ray surface brightness profile is shown in Figure 6, with emission detected reliably out to a radius of  $120''$  (570 kpc) with a total of about 1160 net counts. The profile was fit within *SHERPA* with a standard  $\beta$ -model with best-fit parameters  $\beta = 0.60 \pm 0.03$  and a core-

<sup>9</sup> As will be shown in Section 5, the BGG of G2 actually has a double nucleus with a separation of only  $0''.37$  (2.1 kpc). Since this double nucleus is not apparent in our *Gemini* GMOS imaging, the quoted magnitude of this galaxy combines the luminosities of both nuclei. Our determination of  $\Delta m_{12}$  and  $\Delta m_{14}$  therefore do not consider the two nuclei to be two separate galaxies.





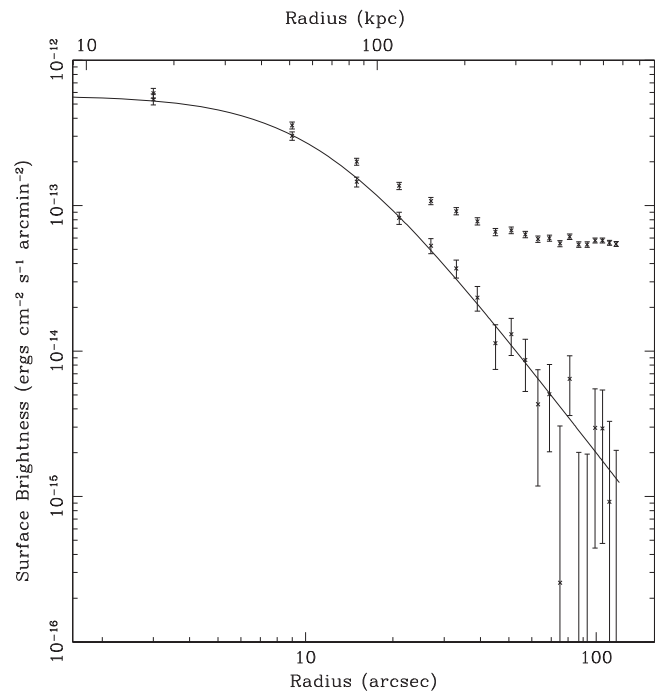
**Figure 4.** Adaptively smoothed 0.3–7.0 keV *Chandra* ACIS-S contours (green) of the Cheshire Cat plotted over the F110W *HST* image showing extended, diffuse X-ray emission. Magenta crosses represent the locations of X-ray point sources. The red circle represents  $0.2 r_{200}$ .



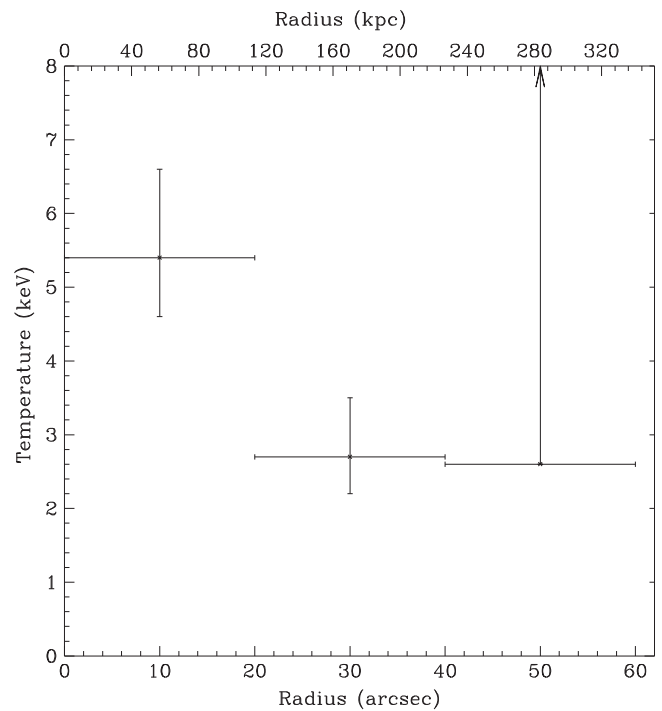
**Figure 5.** *HST* image of the Cheshire Cat group with F390W, F110W, and F160W filters as blue, green, and red in log scale. Likely arc systems are indicated using green, blue, red and cyan circles. The center of each circle is indicated with an “x” of the same color. The X-ray centroid, for comparison, is indicated with a magenta cross. Also note the off-center double nucleus of the western eye. A bright X-ray point source is associated with the northeast (WA) nucleus (cyan arrow).

radius  $r_c = 64.7^{+8.5}_{-7.4}$  kpc ( $1\sigma$  uncertainties), both typical values for groups of galaxies.

The global temperature within a radius of  $60''$  (where with signal-to-noise begins to decline significantly) is  $4.3^{+0.9}_{-0.7}$  keV ( $1\sigma$  uncertainties). No useful constraints could be placed on the



**Figure 6.** Background-subtracted and non-background-subtracted 0.5–7.0 keV X-ray surface brightness profile of the Cheshire Cat group with  $1\sigma$  uncertainties. The best-fit  $\beta$ -profile is also shown with parameters  $\beta = 0.60 \pm 0.03$  and core-radius  $r_c = 64.7^{+8.5}_{-7.4}$  kpc.



**Figure 7.** Temperature profile of the hot gas in the Cheshire Cat with  $1\sigma$  confidence uncertainties.

metallicity of the gas, so it was set to 40% of the solar value for all subsequent work. The inner  $60''$  was broken into three equally spaced annular regions to derive a temperature profile, shown in Figure 7. The central  $20''$  shows a strong peak ( $5.4^{+1.2}_{-0.8}$  keV) before dropping below 3 keV at larger radii. The total 0.3–10 keV ( $0.1$ – $2.4$  keV) luminosity within  $120''$  is

$1.1(0.72) \times 10^{44} \text{ erg s}^{-1}$ . The central cooling time can be estimated from Voigt & Fabian (2004) given as  $t_{\text{cool}} = 20(n_e/10^{-3} \text{ cm}^{-3})^{-1}(T/10^7 \text{ K})^{1/2} \text{ Gyr}$ . Given a central temperature of 5.4 keV and a derived central density of  $1.5 \times 10^{-2} \text{ cm}^{-3}$ , the central cooling time is  $\sim 3 \text{ Gyr}$ .

## 5. HST IMAGING DATA ANALYSIS

In order to study the eye galaxies and gravitational lenses of the Cheshire Cat in more detail, we examined archival observations taken with *HST* WFC3 using the F390W, F110W and F160W filters (program ID 13003). *HST* observed the target for 2400 s with F390W, 1100 s with F110W, and 1200 s with F160W on 2013 March 16. The pivot wavelengths of these filters respectively correspond to 2741, 8060, and 10740 Å in the rest frame. We initially screened for cosmic rays using *lacosmic* (van Dokkum 2001). We aligned and co-added the filter sub-exposures using the *astrodrizzle* package (Gonzaga et al. 2012), with a scale of  $0''.0588$  per pixel and a pixel drop fraction of 0.6.

In order to estimate the center-of-mass for the system for comparison with results from the X-ray data, we examined the arc system of the Cheshire Cat. Belokurov et al. (2009) and Bayliss et al. (2011) identified four major ring systems associated with background galaxies at redshifts 0.80, 0.97, 2.20, and 2.78. The arc system displayed in *HST* imaging, however, is considerably more complex than indicated in either previous study, with multiple overlapping arcs and knots where previously only single knots were assumed. To first order, we assume that the center of mass for the lens is at the center of a circle which fits the surrounding system of arcs and knots, as for a simple ‘‘Einstein ring.’’ We then fit circles by eye which correspond approximately to a given arc system. We begin with the assumption that Belokurov et al. (2009) and Bayliss et al. (2011) have recovered the correct arc systems, and then modify the circles as needed, associating knots by color.

Each of these circles is centered within  $\sim 1''$  of  $(\alpha, \delta) = (10^{\text{h}}38^{\text{m}}43^{\text{s}}079, +48^{\circ}49'18''.39)$ . The X-ray centroid (Section 4) falls very near the lens arc centroids (Figure 5). This result is consistent with the bulk of lensing matter being located at approximately the midpoint between the eastern and western eyes. If, alternatively, we assumed that either eye is the center of a lens, we would expect to see additional knots at other points around the eye, but we find no evidence for such counterpart knots. New and deeper integral field unit spectroscopy could confirm the configuration of these lensing systems, which in turn would allow a more comprehensive mass distribution reconstruction. Such spectroscopy might be possible from the ground with optimal seeing, given a typical knot thickness of  $\sim 0''.7$ . We note that a weak lensing study of this system by Oguri et al. (2012) found an offset between the center of the inferred mass distribution and the BGG of the group, presumably the eastern eye.

Inspection of the western eye reveals it to be complex, with two distinct nuclei separated by  $0''.37$  (2.1 kpc) embedded off-center in an extended optical halo (Figure 5). We label the nucleus to the northeast WA and the nucleus to the southwest WB. Careful alignment of the *Chandra* and *HST* images indicates that the bright X-ray point source mentioned in (Section 4) is associated with the nucleus WA. This X-ray source is coincident with a 5.96 mJy VLA FIRST source. WA also appears significantly brighter in the *HST* F390W band image than WB, while the nuclei are of nearly equal brightness

in the two long wavelength bands. Taken together this indicates that WA harbors an AGN.

## 6. DISCUSSION

### 6.1. The Mass and Size of the Cheshire Cat Group

Our combined optical and X-ray study of the Cheshire Cat system gives us multiple means of determining the mass of the group at various radii as well as characteristic size estimates of the group. Beginning with the galaxy richness parameter  $N_{200} = 23$ ,  $N_{200,G1} = 7$ , and  $N_{200,G2} = 13$ , that we determined in Section 3, we can use scaling relations from the Northern Sky Optical Cluster Survey (NoSOCS; Lopes et al. 2009) to find the predicted  $r_{200}$  and  $M_{200}$ , and compare those values to scaling relations involving measured X-ray quantities. Lopes et al. (2009) find

$$\ln(r_{200}) = 0.05 + 0.39 \ln\left(\frac{N_{200}}{25}\right) h_{70}^{-1} \text{ Mpc}, \quad (1)$$

which gives  $r_{200} = 1.02 \text{ Mpc}$ ,  $r_{200,G1} = 0.64 \text{ Mpc}$ , and  $r_{200,G2} = 0.81 \text{ Mpc}$ . The Lopes et al. (2009) relation for mass  $M_{200}$  is

$$\ln(M_{200}) = 0.21 + 0.83 \ln\left(\frac{N_{200}}{25}\right) \times 10^{14} h_{70}^{-1} M_{\odot} \quad (2)$$

to give masses of  $M_{200} = 1.2 \times 10^{14} M_{\odot}$ ,  $M_{200,G1} = 4.3 \times 10^{13} M_{\odot}$ , and  $M_{200,G2} = 7.2 \times 10^{13} M_{\odot}$ . Alternatively, the  $M_{200}$ – $N_{200}$  relation for maxBCG clusters with a mean redshift of  $z = 0.25$  from Johnston et al. (2007)

$$M_{200} = 1.26 \left(\frac{N_{200}}{20}\right)^{1.28} \times 10^{14} h_{70}^{-1} M_{\odot}, \quad (3)$$

gives masses of  $M_{200} = 1.5 \times 10^{14} M_{\odot}$ ,  $M_{200,G1} = 3.3 \times 10^{13} M_{\odot}$ , and  $M_{200,G2} = 7.3 \times 10^{13} M_{\odot}$ . The mass for G1 is consistent with the mass determined from the velocity dispersion (Section 3), while the mass for G2 is about a factor of two larger than the mass determined from the velocity dispersion.

The galaxy richness parameter can also predict the X-ray properties of the Cheshire Cat group. Once again from Lopes et al. (2009):

$$\ln(L_X) = -1.85 + 1.59 \ln\left(\frac{N_{200}}{25}\right) \times 10^{44} h_{70}^{-1} \text{ erg s}^{-1}, \quad (4)$$

where  $L_X$  is measured in the *ROSAT* 0.1–2.4 keV band, and

$$\ln(T_X) = 1.05 + 0.56 \ln\left(\frac{N_{200}}{25}\right) h_{70}^{-1} \text{ keV}, \quad (5)$$

yielding estimates of  $L_X = 1.4 \times 10^{43} \text{ erg s}^{-1}$  and  $T_X = 2.7 \text{ keV}$  (if applied to each sub-group separately, we obtain  $L_{X,G1} = 2.1 \times 10^{42} \text{ erg s}^{-1}$ ,  $L_{X,G2} = 5.6 \times 10^{42} \text{ erg s}^{-1}$ ,  $T_{X,G1} = 1.4 \text{ keV}$ , and  $T_{X,G2} = 2.0 \text{ keV}$ ). Compared to the measured values of  $L_X(0.1\text{--}2.4 \text{ keV}) = 7.2 \times 10^{43} \text{ erg s}^{-1}$  and  $T_X = 4.3 \text{ keV}$ , the Cheshire Cat is hotter and much more luminous than predicted. We believe the elevated X-ray luminosity and temperature are the result of shock heating from a merger of the two groups, and we will return to this issue in Section 6.2.

We can use the best-fit hot gas temperature along with the best-fit  $r_c$  and  $\beta$  values from the X-ray surface brightness distribution to estimate  $r_{200}$  and total gravitational mass via Helsdon & Ponman (2003) and Arnaud & Evrard (1999)

$$r_{200} = 0.81 \left( \frac{kT}{\text{keV}} \right)^{1/2} h_{70}^{-1} E(z)^{-1} \text{Mpc}, \quad (6)$$

where  $E(z) = [\Omega_m(1+z)^3 + \Omega_\Lambda]^{1/2}$  and

$$M(r = r_{200}) = 8.0810^{14} \beta \times \frac{kT}{10 \text{ keV}} \frac{r_{200}}{\text{Mpc}} \frac{(r_{200}/r_c)^2}{1 + (r_{200}/r_c)^2} h_{70}^{-1} M_\odot, \quad (7)$$

respectively. We calculate each quantity using the measured global temperature of 4.3 keV, and the temperature outside the central, hot core beyond 110 kpc of 2.7 keV which might more accurately represent the unshocked virial temperature of the group. For  $kT = 4.3$  keV, we obtain  $r_{200} = 1.36$  Mpc and  $M_{200} = 2.8 \times 10^{14} M_\odot$ , while for  $kT = 2.7$  keV, we obtain  $r_{200} = 1.08$  Mpc and  $M_{200} = 1.3 \times 10^{14} M_\odot$ . Using a lower temperature of  $kT = 2.7$  keV gives an estimate of  $M_{200}$  more in line with the estimate derived from the galaxy richness and our estimate from the galaxy velocities, lending further credence to the notion that the hot  $>5$  keV gas in the center and the high X-ray luminosity result from shock heating.

We must compare the properties of the Cheshire Cat to cluster samples in the literature rather than groups, since the global temperature of 4.3 keV exceeds that of the hottest groups in group samples (and hotter than all 11 fossil groups in the Miller et al. (2012) sample). With a bolometric X-ray luminosity of  $L_{X,\text{bol}} = 1.1 \times 10^{44} \text{ erg s}^{-1}$ , the Cheshire Cat lies below the best-fit  $L_{X,\text{bol}} - kT$  relation of Vikhlinin et al. (2009) and Wu et al. (1999), indicating that it is hotter than expected for its X-ray luminosity (or alternatively stated, X-ray underluminous for its temperature). This is not unexpected given that the system has likely undergone a recent collision that has shock heated the gas to higher temperature. The Cheshire Cat lies slightly above the  $L_X - M_{200}$  relation of Rykoff et al. (2008) and is consistent with the fossil group sample of (Miller et al. 2012). The summed  $r'$  magnitudes of the confirmed galaxies is  $6 \times 10^{11} L_\odot$ , putting the Cheshire Cat somewhat above the  $L_{\text{opt}} - L_{X,\text{bol}}$  relation of Girardi et al. (2014) for non-fossil groups, but within the scatter for fossil groups. Given that the Cheshire Cat is believed to be a merger, it is useful to compare its properties to the scaling relations of merging groups and clusters. Kettula et al. (2014) recently determined scaling relations for a sample of clusters from weak lensing and X-ray analyses, and found no difference between their merging and non-merging sub-samples within the uncertainties. Thus, even among merging systems the Cheshire Cat appears to be hotter than expected based on scaling relations.

Using the four gravitational arcs that have measured redshifts and assuming the radius of the arc is equal to the Einstein radius, we can estimate the mass inside the radius following, e.g., Narayan & Bartelmann (1996)

$$M = \theta_e^2 \frac{c^2}{4G} \frac{D_s D_l}{D_{ls}}, \quad (8)$$

where  $\theta_e$  is the angular Einstein radius,  $c$  is the speed of light,  $G$  is the gravitational constant,  $D_s$  and  $D_l$  are the angular diameter distances to the lensed galaxy and the lens, respectively, and  $D_{ls}$  is the distance between the lensed galaxy and the lens. The four arcs have angular radii of  $9''.0$ ,  $9''.7$ ,  $12''.3$ , and  $12''.5$  (51, 55, 70, and 71 kpc, respectively) corresponding to lensed galaxies at redshifts 0.97, 2.78, 0.80, and 2.20, leading to mass estimates of  $2.3 \times 10^{13} M_\odot$ ,  $1.8 \times 10^{13} M_\odot$ ,  $5.3 \times 10^{13} M_\odot$ , and  $3.3 \times 10^{13} M_\odot$ , respectively. These are comparable to the values obtained by Belokurov et al. (2009) and Kubo et al. (2009) for the arc redshifts that were known at the time of those studies. The uncertainties of the positions of the centers of the arcs and therefore the angular radii of the arcs of  $\sim 1''.5$  lead to uncertainties on the mass estimates of 20%–30%, which may explain why the masses do not increase monotonically with radius. The above formula is also only strictly accurate for a point source mass rather than an extended mass distribution. Still, it is clear that the large lensing masses within a small volume demonstrate that this is a very mass-concentrated group, in agreement with the very high  $c_{200}$  parameter of 17–34 as measured by Bayliss et al. (2011) and Wiesner et al. (2012).

## 6.2. A Nearly Certain Line of Sight Merger

The dynamical state of the Cheshire Cat is undoubtedly complex, but a number of results indicate that the system has experienced a merger very recently. The most likely scenario is that the eastern eye was the central galaxy in a group that collided with a roughly comparable mass group centered on the western eye in a direction nearly along the line of sight. The most compelling evidence is the double-peaked velocity distribution (Figure 2), with  $\sim 19$  galaxies centered at 0.4278 and  $\sim 29$  galaxies centered at 0.4329, a group rest frame velocity difference of  $1350 \text{ km s}^{-1}$ . It is unlikely that this velocity difference is due to the Hubble flow with the two groups separated along the line of sight by a proper distance of 12 Mpc for three reasons. First, if these were two separate, non-interacting groups each would have its own much fainter X-ray halo centered on its own BGG which would not have interacted yet given the 12 Mpc separation. Instead, we see only one X-ray halo that is not centered on either bright elliptical eye, but whose centroid is located approximately midway between the two eye BGGs. The collision of the two X-ray halos along the line of sight would most likely not produce any spatial asymmetries in the X-ray contours as is commonly seen in plane-of-the-sky mergers, which explains why the X-ray surface brightness is well-fit by a single  $\beta$ -model.

Second, none of the gravitational lens arc centers coincide with either eye, but instead all cluster within 9 kpc of one another at a position midway between the eyes near the position of the X-ray centroid (Figure 5). This is particularly relevant for the arc centers, which are most sensitive to the dark matter distribution, indicating that neither eye is located at the center of the mass distribution of the group. In addition, the fact that neither eye is even at the center of its own galaxy distribution in velocity space (see Figure 2) suggests that both galaxies have been dislodged from their respective dark matter distribution centers during their gravitational interaction during the merging process.

Third, the temperature of the X-ray gas in the central 20" (110 kpc) is 5.4 keV and the global temperature of 4.3 keV is

hotter than would be expected for a group of this mass or richness value. While the scaling relations of Lopes et al. (2009) were derived using largely normal groups rather than specifically fossil groups, we can look to fossil groups of similar galaxy richness in the literature for a comparison. In the fossil group sample of Miller et al. (2012), the two fossil groups with  $N_{200}$  greater than 20 have measured global X-ray temperatures of 2.6 and 1.6 keV. The Lopes et al. (2009) relation for  $N_{200}$  versus X-ray luminosity predicts an X-ray luminosity of  $1.4 \times 10^{43}$  erg s<sup>-1</sup> for the Cheshire Cat, which is a factor of 4.5 below what is measured, while the two  $N_{200} > 20$  fossil groups of Miller et al. (2012) have soft X-ray luminosities  $\leq 1 \times 10^{43}$  erg s<sup>-1</sup>, in accordance with the Lopes et al. (2009) relation. The elevated X-ray temperature and luminosity of the Cheshire Cat are characteristic of shock heating brought about by a high velocity impact between the two groups. We can roughly estimate the Mach number of the collision from the ratio of the estimated pre-shock temperature of the larger group prior to impact, 2.0 keV (the assumed pre-merger temperature of the G2 group), to the post-shock temperature of 5.4 keV in the central regions of the group. Applying the Rankine–Hugueniot equations with a temperature jump of a factor of  $\sim 2.7$  we estimate the Mach number  $M \sim 2.4$  (see Markevitch & Vikhlinin 2007). Given that the sound speed of an ideal gas at 2.0 keV is approximately 720 km s<sup>-1</sup> and assuming that the velocity difference between the two sub-group peaks was 1350 km s<sup>-1</sup>, a similar Mach number ( $M \sim 1.9$ ) is obtained if we assume the collision has happened along or nearly along our line of sight.

In summary, there is abundant evidence that two groups, with mass ratios of 1–2:1 have collided along our line of sight. The resulting supersonic collision has shocked heated the gas in the center of the group to  $>5$  keV, and significantly raised the total X-ray luminosity of the gas as a result.

### 6.3. The Past and Future of the Cheshire Cat and Its Implications on Fossil Groups

It seems likely that the Cheshire Cat is composed of two separate groups that have recently begun the merging process. If true, then the 19 spectroscopically confirmed members of the eastern eye group (G1) might have composed a small fossil group prior to the merging, as discussed in Section 3. It is likely that the eastern eye that was the BGG of that group was more than two magnitudes brighter than the next brightest galaxy in that group (Section 3). It is also likely this group had an X-ray halo exceeding  $L_{X,\text{bolometric}} > 10^{42} h_{50}^{-2}$  erg s<sup>-1</sup> based on  $N_{200} - L_X$  scaling relations to satisfy the formal definition of a fossil group. For our choice of  $h$  and after converting from bolometric to 0.1–2.4 keV luminosity (assuming a 1–2 keV group temperature expected for an  $N_{200} = 7$  group), this luminosity threshold becomes  $4 \times 10^{41}$  erg s<sup>-1</sup>. The Lopes et al. (2009) relation between  $N_{200}$  and  $L_X$  predicts  $L_X = 2 \times 10^{42}$  erg s<sup>-1</sup> for an  $N_{200} = 7$  group, with all four groups in the Lopes et al. (2009) sample with  $N_{200} = 6$ –10 actually above the best-fit relation (all above  $4 \times 10^{42}$  erg s<sup>-1</sup>). Given that the expected 0.1–2.4 keV luminosity of G1 is an order of magnitude above the Jones et al. (2003) threshold, it is very likely that G1 met the X-ray criterion of a fossil group before its merger with G2. Similar arguments make it likely that the G2 group also had a high enough X-ray luminosity to

fulfill the Jones et al. (2003) X-ray criterion, although it marginally failed both the  $\Delta m_{12}$  and  $\Delta m_{14}$  fossil group criteria.

We can estimate the timescale for the the “E” and “W” eye galaxies to merge into one system, creating an even more luminous galaxy at the center of the Cheshire Cat. We utilize the results of Kitzbichler & White (2008), who use a semi-analytic model based on the Millennium  $N$ -body simulation to estimate the merging rate and timescale of galaxy pairs. They find that the merging timescale is  $T \approx 1.6 r_* M_*^{-0.3}$  Gyr for galaxies where the line of sight velocity difference between the two galaxies is less than 3000 km s<sup>-1</sup>, where  $r_*$  is the maximum projected separation of the two galaxies in units of  $35.7 h_{70}^{-1}$  kpc and  $M_*$  is the stellar mass of the galaxies in units of  $4.3 \times 10^{10} h_{70}^{-1} M_\odot$ . After the eye galaxies merge, they would have an apparent  $r'$  magnitude of 18.24, which once corrected for K-corrections and elliptical galaxy evolutionary corrections (Roche et al. 2009; Girardi et al. 2014) leads to an absolute magnitude of the merged galaxy of  $M_r = -24.0$ . Assuming a mass-to-light ratio of six in the  $r'$  band for an elliptical galaxy, the approximate mass divided equally between the two galaxies is  $8.9 \times 10^{11} M_\odot$ . This would give a merging time of  $\sim 0.9$  Gyr. A similar calculation indicates that the dual nucleus of the western eye (WA and WB) should merge on a timescale of just a few tens of Myr, well before the eyes themselves merge.

Following the merger, the merged galaxy will be more than two magnitudes brighter than the next brightest spectroscopically confirmed galaxy within  $0.5 r_{200}$  of the combined system, which we estimate to be 0.5 Mpc for an eventually relaxed  $N_{200} = 23$  group (Section 6.1). Within this radius, there are two galaxies without spectroscopic redshifts that are bright enough to ruin the fossil group status of the merged system by violating the  $\Delta m_{12} > 2.0$  criterion. However, these galaxies are both quite blue and are statistically unlikely to be located within the Cheshire Cat. If the  $\Delta m_{14} > 2.5$  criterion is used instead, the merged group will qualify as a fossil group regardless of the group membership status of the two blue galaxies. The X-ray criterion of a fossil group should be easily satisfied. Even after the high shock-induced X-ray luminosity declines, the expected X-ray luminosity for a relaxed  $N_{200} = 23$  group is  $\text{few} \times 10^{43}$  erg s<sup>-1</sup> (Lopes et al. 2009), well above the Jones et al. (2003) X-ray criterion.

High mass concentrations  $c_{200}$  are expected of fossil groups (e.g., Khosroshahi et al. 2007), so the high measured  $c_{200}$  value already present in the Cheshire Cat system is not unexpected given that both G1 and G2 were believed to be fossil and near-fossil groups prior to the merger. However, in this situation, a high mass concentration is not necessarily evidence of the fossil group (or near-fossil group) natures of the initial subgroups. Line of sight mergers are known to increase concentration parameters markedly (e.g., Corless & King 2007). Thus, it is not possible to disentangle the contribution to  $c_{200}$  from the possible fossil group nature of the subgroups from the boost to  $c_{200}$  given to the system from the geometry of the merger.

It is interesting to note that given the merger timescale, any observer who is currently within  $z \sim 0.3$  of the Cheshire Cat should already see a massive fossil group with a luminous  $M_r = -24.0$  BGG at its center. Most fossil groups identified to date have been at  $z = 0.3$  or closer. Thus, from our point of view the Cheshire Cat gives us the opportunity to study the properties of a massive fossil group progenitor before its final

assembly that can be compared to more nearby systems that have already achieved fossil group status.

Despite not being a fossil group yet, our current view of the Cheshire Cat illustrates the ambiguity of fossil group definitions. The system G1 most likely was already a fossil group, but had its fossil group status removed when it merged with G2. The group will transition back to fossil group status once the eye galaxies merge in a Gyr, but the fossil group status is always subject to change if even one new luminous system enters the system via a future merger, and future observers will classify the object as a normal group. In the local universe, this appears to be happening to the NGC 1407 group, which would be classified as a fossil group if it were not for the high velocity infall of NGC 1400 into the group at the moment (Su et al. 2014). In this regard, the  $\Delta m_{14} > 2.5$  mag criterion for a fossil group may be more robust against the infall of a single luminous galaxy than the  $\Delta m_{12} > 2.0$  mag criterion for a fossil group, but both methods are susceptible to the infall of a group with more than one moderately large elliptical galaxy. Moving in and out of a fossil group phase is expected, as  $N$ -body simulations of the evolution of galaxy groups (e.g., von Benda-Beckmann et al. 2008; Dariush et al. 2010; Cui et al. 2011; Gozaliasl et al. 2014), indicate that few fossil groups identified by either magnitude gap definition at high redshift survive to remain fossil groups at present, and few fossil groups at  $z = 0$  were identified as fossil groups at high redshift. Yet if there is a fundamental difference between fossil groups and normal groups, in the sense that fossil groups assembled earlier as the name implies, and manifested by larger mass concentration parameters and X-ray scaling relations that more closely resemble clusters than groups, such differences will not be altered by the infall of a modest number of moderately luminous galaxies. This highlights the problems of defining an efficient method for identifying truly old galaxy systems. Indeed, Dariush et al. (2010) finds that neither the  $\Delta m_{12} > 2.0$  mag nor the  $\Delta m_{14} > 2.5$  criteria are particularly efficient at selecting systems that formed early in their simulations. We note that the simulations do suggest, however, that the large mass ( $1.2\text{--}1.5 \times 10^{14} M_{\odot}$ ) and  $\Delta m_{14}$  (2.70 mag) of the future Cheshire Cat post-merger will allow the Cheshire Cat to remain a fossil group longer than a typical fossil group. Gozaliasl et al. (2014) find that 40% of fossil groups with masses exceeding  $10^{14} M_{\odot}$  (which might be more accurately called fossil clusters) retain their fossil group status from  $z = 1$  to  $z = 0$ , a much larger fraction than was found for lower mass fossil groups. Also, Dariush et al. (2010) find that fossil groups that meet the  $\Delta m_{14} > 2.5$  criterion remain fossil groups for an additional Gyr on average compared to fossil groups that meet the  $\Delta m_{12} > 2.0$  criterion. So there is a reasonable chance that the Cheshire Cat will remain a fossil group for quite a while following the merger.

Previous studies have noted the lack of cool cores in some fossil groups (Khosroshahi et al. 2004, 2006; Sun et al. 2004), which is unexpected if fossil groups are old systems that have been passively evolving since early times. However, if some fossil groups form from the merger of two fossil (or near-fossil) groups like the Cheshire Cat system, any pre-existing cool core in one or both of the pre-merger groups will likely be destroyed by shock heating due to the merger. Given the high relative velocity between G1 and G2, any cool core present within either group would have been destroyed by the merger. We calculated in Section 4 that the central cooling time of the

Cheshire Cat is 3 Gyr, and it will take even longer for gas to cool out at a sufficiently large radius for a cool core to be identified observationally at the redshift of the group. On the other hand, the group should satisfy the condition for a fossil group once the two eye galaxies merge in about 0.9 Gyr. Thus, for at least 2 Gyr the Cheshire Cat will appear as a fossil group without a cool core. This implies that if the merger of two fossil (or near-fossil) groups can be a common avenue for the formation of fossil groups, the lack of well-developed cool cores in some present-day fossil groups is a consequence of the lag in time between the final galaxy merger and the establishment of a cool core following the shock heating of the intragroup media of each merging sub-group.

#### 6.4. Similar Systems to the Cheshire Cat Group

We searched the literature for descriptions of other groups of galaxies that could potentially be fossil group progenitors, i.e., systems with two or more giant elliptical galaxies close enough to merge in less than a few Gyr surrounded by a collection of galaxies with brightnesses at least two magnitudes fainter than the expected brightness of the final merged galaxy. J054–0309 studied by Schirmer et al. (2010) is believed to be a fossil group falling into a spiral-dominated sparse cluster, although in this case there is only one bright elliptical. Also, the hot ICM is cooler than expected (rather than hotter than expected like the Cheshire Cat) with no evidence of shock heating indicative of a recent merger. There also is no clear evidence of a double-peaked velocity distribution of the galaxies. In fact, Schirmer et al. (2010) speculate that rather than a sparse cluster, this component may be galaxies feeding an existing fossil group along a filament. While interesting, this is substantially different from what we propose for the Cheshire Cat.

UGC842 (Lopes de Oliveira et al. 2010) is a low-mass fossil group that exhibits a double-peaked velocity distribution, and a higher than expected ICM temperature indicative of shock heating, similar to the Cheshire Cat, but with one velocity peak dominated by ellipticals and the other velocity peak containing a significant fraction of spirals. However, the entire system also contains only one giant elliptical galaxy, and Lopes de Oliveira et al. (2010) were unable to determine whether the two subgroups are interacting or merely projected along the line of sight.

Zarattini et al. (2014) point out that the group FGS06 (Santos et al. 2007) is composed of two bright ellipticals of nearly equal brightness, and then a large gap between the second-rank galaxy and the third-rank galaxy. If the second-ranked galaxy was removed, the system would fail the  $\Delta m_{12} > 2.0$  mag criterion for a fossil group, although it would pass the  $\Delta m_{14} > 2.5$  mag criterion. Zarattini et al. (2014) suggest this is a transitional fossil system. However, the two brightest galaxies are so far apart (projected separation of nearly 300 kpc) that they will not be merging any time soon to create a fossil group like the Cheshire Cat. In other words, FGS06 is “stuck” in this transitional phase for the foreseeable future.

Perhaps the closest analog to the Cheshire Cat is CL 0958 +4702, whose constituent central galaxies will coalesce with the brightest cluster galaxy in 110 Myr (Rines et al. 2007). While this combined galaxy will only be 1.3 mag brighter than the future second-ranked galaxy, a substantial amount of intracluster light (totaling  $10^{11} L_{\odot}$ ) surrounding the merging galaxies in a halo is expected to be accreted by the merged

galaxy in a Gyr. If the entire amount of intracluster light is accreted, the magnitude gap between the merged system and the second-ranked galaxy will be  $\sim 2.0$  mag, possibly qualifying this system as a fossil group progenitor. The hot gas component of CL 0958+4702 is somewhat cooler and less X-ray luminous than the Cheshire Cat with a 50% smaller virial mass, and does not show evidence for merging in either its X-ray properties or galaxy velocity distribution as the Cheshire Cat does.

A lack of a substantial number of identified fossil progenitors does not necessarily indicate that the Cheshire Cat is rare or unique, but could result from the fact that a concerted effort has not been undertaken to find such systems. A search for more groups transitioning from the non-fossil phase to the fossil phase via mergers would lend insight into how fossil groups form. We have begun an effort to identify galaxy systems with two or more bright elliptical galaxies surrounded by a population of much fainter galaxies, in which the brightest elliptical galaxies are expected to merge on time scales of less than a few Gyr to form a fossil group by  $z \sim 0.1$  or less. By forming a sequence of systems with a variety of merging time scales, we can form an evolutionary sequence of groups from non-fossil to fossil phase. Millennium simulations predict that  $L^*$  evolves differently as a function of redshift for fossil groups than it does for non-fossil groups (Gozali et al. 2014). A comparison of the galaxy luminosity function and  $L^*$  of progenitors might indicate whether groups identified as fossil group progenitors more closely follow the  $L^*$  relation for fossil groups or non-fossil groups. The X-ray scaling relations of fossil group progenitors might also differ from those of either fossil groups or non-fossil groups, particularly if shock heating due to merging subgroups as is believed to be happening in the case in the Cheshire Cat is common. To date, most simulations have mainly focused on the properties of groups once they have already reached the fossil phase, with little emphasis on the fossil group progenitor phase other than how long the groups stay in this progenitor phase on their way in/out of this phase. It would be useful if future simulations included a more detailed study of the fossil group progenitor phase as the group transitions from non-fossil group to fossil group, tracing such quantities as the galaxy luminosity function of groups in the progenitor phase, shock heating due to heating and the subsequent cooling time scales of the hot gas, and galaxy merging time scales for the last two large galaxies to become the BGG of the eventual fossil group.

## 7. SUMMARY

Our optical and X-ray study of the Cheshire Cat gravitational lens system indicates that this system is one of the most likely (and potentially the first) example of a fossil group progenitor. Our primary findings are as follows.

(1) We obtained *Gemini* GMOS-determined spectroscopic redshifts for 34 group galaxies, and added 14 more from the literature. The group shows a bimodal velocity distribution, with peaks separated by  $1350 \text{ km s}^{-1}$ . The two eye galaxies lie in different peaks, although neither eye is at the center of its respective velocity peak. Using our imaging and velocity information along with published galaxy richness and X-ray scaling relations, we find that for the Cheshire Cat  $N_{200} = 23$ ,  $\sigma_{10s} = 659 \pm 69 \text{ km s}^{-1}$ ,  $r_{200} = 1.0\text{--}1.3 \text{ Mpc}$ , and  $M_{200} = (1.2\text{--}1.5) \times 10^{14} M_{\odot}$ . Dividing the galaxies into two separate sub-group distributions gave velocity dispersions of

$\sigma_{10s} = 318 \pm 51 \text{ km s}^{-1}$  and  $\sigma_{10s} = 337 \pm 42 \text{ km s}^{-1}$ , and virial masses of  $(0.33 \pm 0.07) \times 10^{14} M_{\odot}$  and  $(0.39 \pm 0.06) \times 10^{14} M_{\odot}$ , respectively, for the eastern eye group (G1) and the western eye group (G2). On the other hand, group scaling relations predict that G2 is approximately twice as massive as G1. Four separate gravitational arcs give mass estimates of  $\text{few} \times 10^{13} M_{\odot}$  inside a radius of  $\sim 60 \text{ kpc}$ .

(2) The Cheshire Cat shows abundant evidence for a merging of two groups of approximately equal mass along the line of sight. In addition to a bimodal velocity distribution, the central X-ray temperature and X-ray luminosity are much higher than expected for its galaxy richness even in comparison to fossil groups, indicating heating from an  $M \sim 1.9\text{--}2.4$  shock. Also, the center of the X-ray halo and of the four gravitational arcs are not located at the position of either eye galaxy, but midway between them, indicating that neither of the two dominant galaxies in the system reside at the center of the mass distribution of the group. Before the collision, the eastern eye was mostly likely the BGG of a small fossil group, and the western eye was most likely the BGG of a near-fossil group.

(3) *HST* imaging reveals that the western eye is composed of two nuclei of similar brightness embedded off-center in an extended stellar halo. The nuclei are separated by a projected distance of only 2.1 kpc, and should merge together in a few tens of Myr. The two eye galaxies should merge in less than a Gyr to form a massive fossil group with a  $M_r = -24.0$  BGG at its center, after which the system will be a fossil group. Thus, the Cheshire Cat is a prime candidate for a fossil group progenitor. Observers currently within  $z \sim 0.3$  most likely already see the Cheshire Cat as a massive fossil group.

(4) The timescale for the eyes to merge and for the system to satisfy the criteria of a fossil group is shorter than the estimated cooling time of the hot gas in the core of the group. This means there will be a period of time where the system will be a fossil group without a cool core. If the merging of fossil (or near-fossil) groups is a viable mechanism for creating a substantial fraction of present-day fossil groups, the observed lack of cool cores in some fossil groups is understandable.

We thank Rob Proctor, Ka-Wah Wong, Dacheng Lin, and Li Ji for useful conversations and feedback, and the anonymous referee for a thorough reading of the manuscript. We also thank Matthew Bayliss for assisting us in obtaining galaxy redshifts from his sample. This work was supported by *Chandra* Grant GO0-11148X, and based partially on observations obtained at the *Gemini* Observatory, which is operated by the Association of Universities for Research in Astronomy, Inc., under a cooperative agreement with the NSF on behalf of the *Gemini* partnership: the National Science Foundation (United States), the National Research Council (Canada), CONICYT (Chile), the Australian Research Council (Australia), Ministério da Ciência, Tecnologia e Inovação (Brazil) and Ministerio de Ciencia, Tecnología e Innovación Productiva (Argentina).

## REFERENCES

- Arnaud, M., & Evrard, A. E. 1999, *MNRAS*, 305, 631  
 Ashman, K. M., Bird, C. M., & Zepf, S. E. 1994, *AJ*, 108, 2348  
 Bayliss, M. B., Hennawi, J. F., Gladders, M. D., et al. 2011, *ApJS*, 193, 8  
 Bayliss, M. B., Johnson, T., Gladders, M. D., Sharon, K., & Oguri, M. 2014, *ApJ*, 783, 41  
 Beers, T. C., Flynn, K., & Gebhardt, K. 1990, *AJ*, 100, 32  
 Belokurov, V., Evans, N. W., Hewett, P. C., et al. 2009, *MNRAS*, 392, 104

- Bertin, E., & Arnouts, S. 1996, *A&AS*, **117**, 393
- Carroll, L. 1865, *Alice's Adventures in Wonderland* (London: Macmillan)
- Corless, V. L., & King, L. J. 2007, *MNRAS*, **380**, 149
- Cui, W., Springel, V., Yang, X., de Lucia, G., & Borgani, S. 2011, *MNRAS*, **416**, 2997
- Cypriano, E. S., Mendes de Oliveira, C. L., & Sodré, L. J. 2006, *AJ*, **132**, 514
- Dariush, A. A., Raychaudhury, S., Ponman, T. J., et al. 2010, *MNRAS*, **405**, 1873
- Dickey, J. M., & Lockman, F. J. 1990, *ARA&A*, **28**, 215
- Fassnacht, C. D., Kocevski, D. D., Auger, M. W., et al. 2008, *ApJ*, **681**, 1017
- Finoguenov, A., & Ponman, T. J. 1999, *MNRAS*, **305**, 325
- Girardi, M., Aguerri, J. A. L., De Grandi, S., et al. 2014, *A&A*, **565**, A115
- Gonzaga, S., Hack, W., Fruchter, A., Mack, J., et al. 2012, *The DrizzlePac Handbook*, HST Data Handbook (Baltimore, MD: STScI)
- Gozaliasl, G., Khosroshahi, H. G., Dariush, A. A., et al. 2014, *A&A*, **571**, A49
- Grant, C. E., Bautz, M. W., Chartas, G., & Garmire, G. P. 2004, *ApJ*, **610**, 686
- Grevesse, N., & Sauval, A. J. 1998, *SSRv*, **85**, 161
- Halkola, A., Hildebrandt, H., Schrabback, T., et al. 2008, *A&A*, **481**, 65
- Harrison, C. D., Miller, C. J., Richards, J. W., et al. 2012, *ApJ*, **752**, 12
- Heisler, J., & Bahcall, J. 1985, *ApJ*, **298**, 8
- Helsdon, S. F., & Ponman, T. J. 2003, *MNRAS*, **340**, 485
- Hook, I. M., Jørgensen, I., Allington-Smith, J. R., et al. 2004, *PASP*, **116**, 425
- Johnston, D. E., et al. 2007
- Jones, L. R., Ponman, T. J., & Forbes, D. A. 2000, *MNRAS*, **312**, 139
- Jones, L. R., Ponman, T. J., Horton, A., et al. 2003, *MNRAS*, **343**, 627
- Kettula, K., Giodini, S., van Uitert, E., et al. 2014, arXiv:1410:8769
- Khosroshahi, H. G., Jones, L. R., & Ponman, T. J. 2004, *MNRAS*, **349**, 1240
- Khosroshahi, H. G., Maughan, B. J., Ponman, T. J., & Jones, L. R. 2006, *MNRAS*, **369**, 1211
- Khosroshahi, H. G., Ponman, T. J., & Jones, L. R. 2007, *MNRAS*, **377**, 595
- Kitzbichler, M. G., & White, S. D. M. 2008, *MNRAS*, **391**, 1489
- Kubo, J. M., Allam, S. S., Annis, J., et al. 2009, *ApJL*, **696**, L61
- Lopes, P. A. A., de Carvalho, R. R., Kohl-Moreira, J. L., & Jones, C. 2009, *MNRAS*, **399**, 2201
- Lopes de Oliveira, R., Carrasco, E. R., Mendes de Oliveira, C., et al. 2010, *AJ*, **139**, 216
- Markevitch, M., & Vikhlinin, A. 2007, *PhR*, **443**, 1
- Mendes de Oliveira, C. L., Cypriano, E. S., & Sodré, L. J. 2006, *AJ*, **131**, 158
- Miller, E. D., Rykoff, E. S., Dupke, R. A., et al. 2012, *ApJ*, **747**, 94
- Narayan, R., & Bartelmann, M. 1996, arXiv:astro-ph/9606001
- Oguri, M., Bayliss, M. B., Dahle, H., et al. 2012, *MNRAS*, **420**, 3213
- Ponman, T. J., Allan, D. J., Jones, L. R., et al. 1994, *Natur*, **6480**, 462
- Proctor, R. N., de Oliveira, C. M., Dupke, R., et al. 2011, *MNRAS*, **418**, 2054
- Rines, K. F., Finn, R., & Vikhlinin, A. 2007, *ApJL*, **665**, L9
- Roche, N., Bernardi, M., & Hyde, J. 2009, *MNRAS*, **398**, 1549
- Rykoff, E. S., Evrard, A. E., McKay, T. A., et al. 2008, *MNRAS*, **387**, L28
- Rzepecki, J., Lombardi, M., Rosati, P., Bignamini, A., & Tozzi, P. 2007, *A&A*, **471**, 743
- Santos, W. A., Mendes de Oliveira, C., & Sodré, L. 2007, *AJ*, **134**, 1551
- Schirmer, M., Suyu, S., Schrabback, T., et al. 2010, *A&A*, **514**, A60
- Su, Y., Gu, L., White, R. E. I., & Irwin, J. 2014, *ApJ*, **786**, 152
- Sun, M., Donahue, M., Jones, C., Forman, W., & Vikhlinin, A. 2009, *ApJ*, **693**, 1142
- Sun, M., Forman, W., Vikhlinin, A., et al. 2004, *ApJ*, **612**, 805
- Tonry, J., & Davis, M. 1979, *AJ*, **84**, 1511
- van Dokkum, P. G. 2001, *PASP*, **113**, 1420
- Vikhlinin, A., McNamara, B. R., Hornstrup, A., et al. 1999, *ApJL*, **520**, L1
- Vikhlinin, A., Burenin, R. A., Ebeling, H., et al. 2009, *ApJ*, **692**, 1033
- Voevodkin, A., Borozdin, K., Heitmann, K., et al. 2010, *ApJ*, **708**, 1376
- Voigt, L. M., & Fabian, A. C. 2004, *MNRAS*, **347**, 1130
- von Benda-Beckmann, A. M., D'Onghia, E., Gottlöber, S., et al. 2008, *MNRAS*, **386**, 2345
- Wechsler, R. H., Bullock, J. S., Primack, J. R., Kravtsov, A. V., & Dekel, A. 2002, *ApJ*, **568**, 52
- Wiesner, M. P., Lin, H., Allam, S. S., et al. 2012, *ApJ*, **761**, 1
- Wu, X.-P. 2000, *MNRAS*, **316**, 299
- Wu, X.-P., Xue, Y.-J., & Fang, L.-Z. 1999, *ApJ*, **524**, 22
- Zarattini, M. B., Barena, R., Giraldo, M., et al. 2014, *A&A*, **565**, A116