

A season of record-breaking heat and a year of drought has significantly reduced SOUTHCOM's resilience to weather shocks. There is little sign of relief for dry areas in the forecast, particularly for Brazil and Bolivia.

Heat and Drought

High temperatures across SOUTHCOM will **increase power demand for cooling** and **increase agricultural water needs**.

Risk of **drought-related crop stress** will increase in the continental Caribbean and Central America. Food insecurity has been cited as a reason for **migration out of the Dry Corridor**.

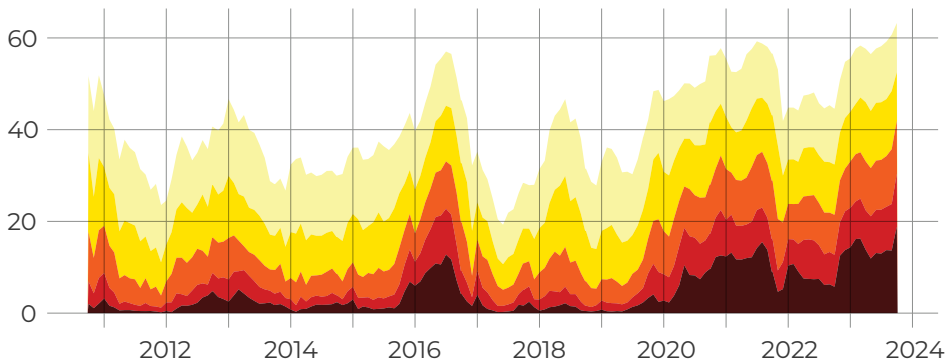
Heatwaves could **impede JIATF-S aerial narcotics surveillance** capacity, providing cartels with an opportunity to increase activities undetected.

The **Santo Antonio hydropower plant**, Brazil's 4th largest, has **temporarily ceased operations due to low water**; there is little relief in the forecast.

The Brazilian Amazon and Bolivia will see increased risk of **slash-and-burn and wild fires growing out of control**.

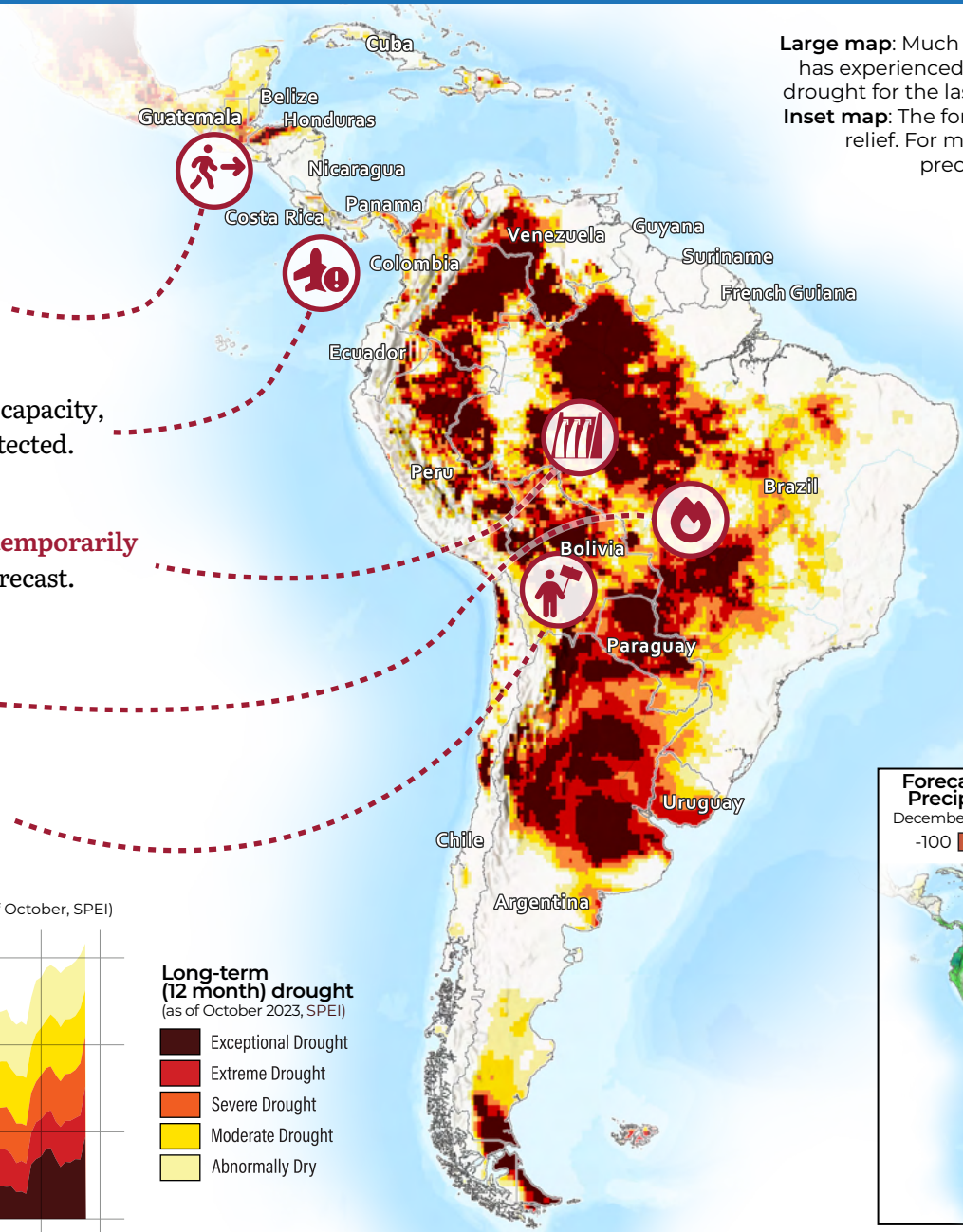
Drought in Bolivia **could revive the anti-government protests** that happened in 2016.

Percentage of SOUTHCOM in long-term (12 month) drought (as of October, SPEI)

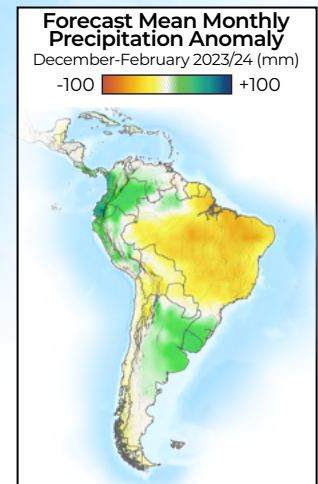


Long-term (12 month) drought (as of October 2023, SPEI)

- Exceptional Drought
- Extreme Drought
- Severe Drought
- Moderate Drought
- Abnormally Dry



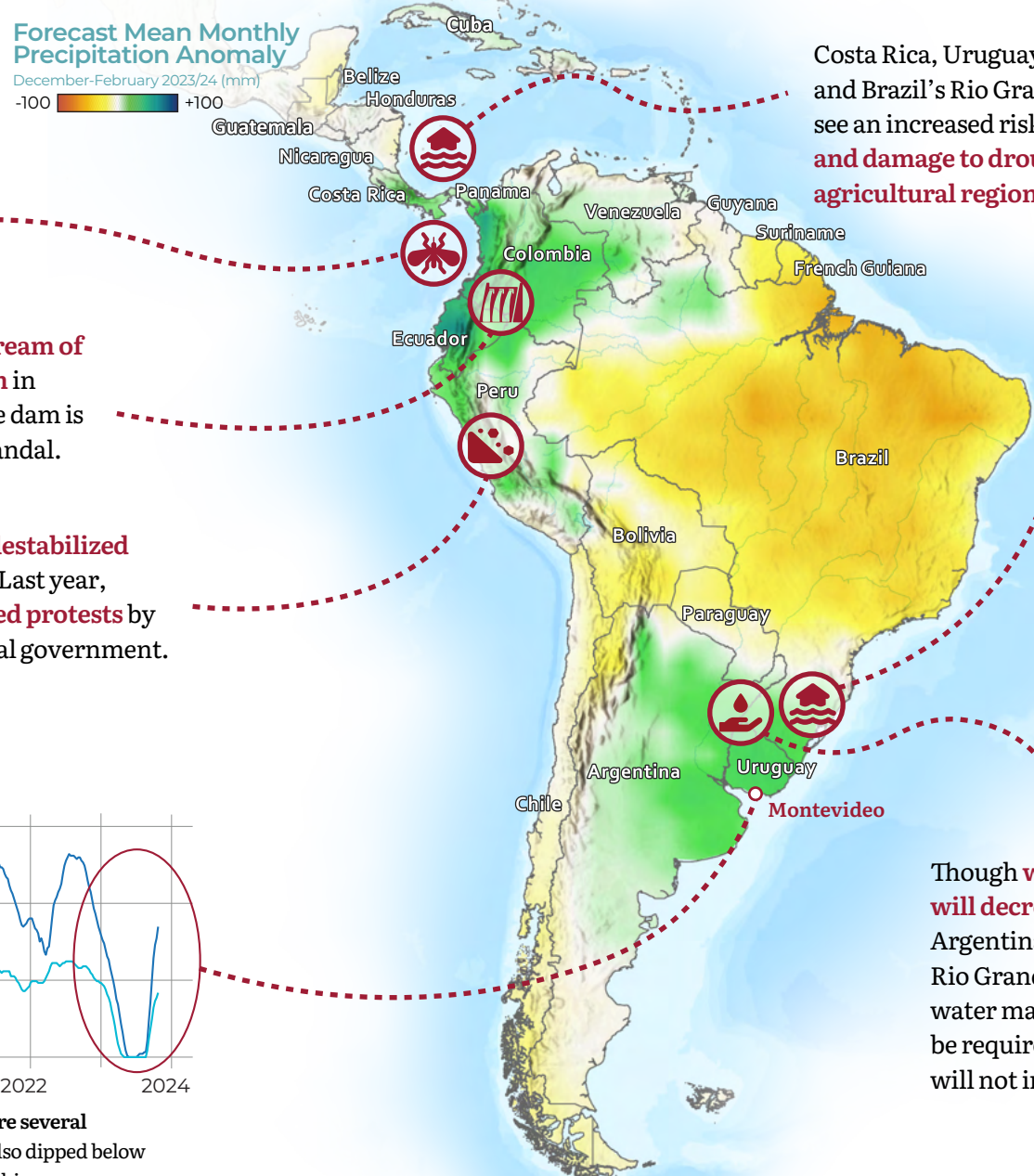
Large map: Much of South America has experienced intense heat and drought for the last twelve months.
Inset map: The forecast shows little relief. For more details on the precipitation forecast, see page 2.



Heavy rain will fall over regions still recovering from last year's landslides in Ecuador and Peru and over regions left impervious by drought in Argentina and Uruguay; both conditions increase the risk of flash floods and infrastructure damage.

Heavy Rain

Forecast Mean Monthly Precipitation Anomaly
December-February 2023/24 (mm)
-100 +100



Risk of **water- and mosquito-borne disease will increase**, particularly in coastal Colombia, Ecuador, and Peru.

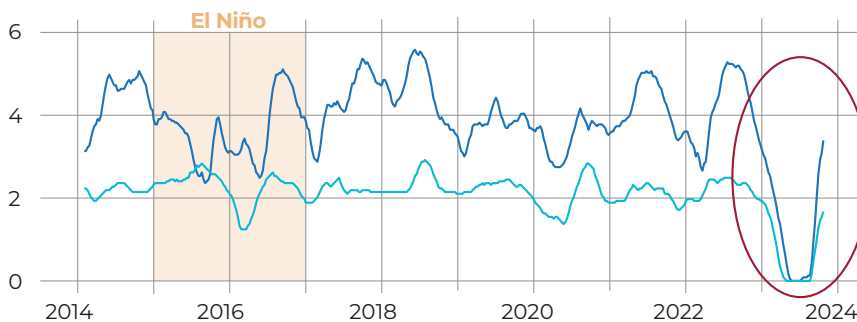
There will be a risk of increased **erosion downstream of the already threatened Coca Codo Sinclair Dam** in Ecuador, threatening its structural integrity. The dam is also at the center of a government corruption scandal.

Risk of **landslides will increase in regions still destabilized from last summer's damaging rainfall** in Peru. Last year, **perceived insufficient disaster response spurred protests** by Peruvian municipal politicians against the central government.

Costa Rica, Uruguay, Argentina, and Brazil's Rio Grande do Sul will see an increased risk of **flash floods and damage to drought-weakened agricultural regions**.

Though **water shortages will decrease** in Uruguay, Argentina, and Brazil's Rio Grande do Sul, careful water management will still be required as reservoirs will not immediately refill.

Montevideo Water Supply Reservoir Surface Area (km²)



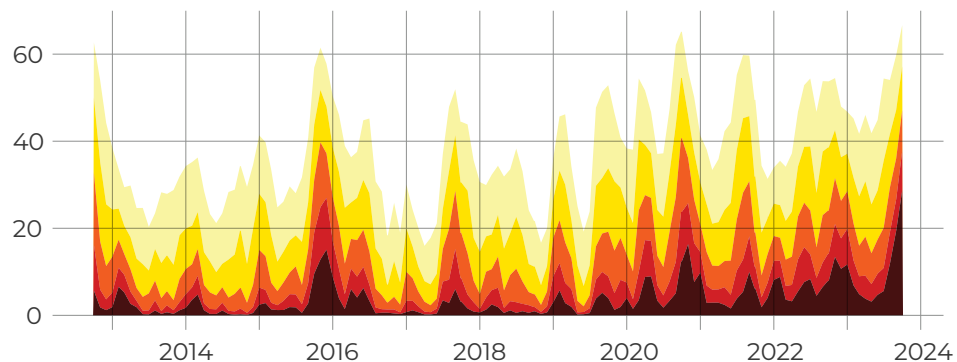
Montevideo's water supply reservoirs are recovering but **will require several consecutive seasons of rain** to return to normal. Reservoir levels also dipped below normal during the **2015/16 El Niño**, but not to the same extreme as this year.

SOUTHCOM, 2023: Supplemental Information

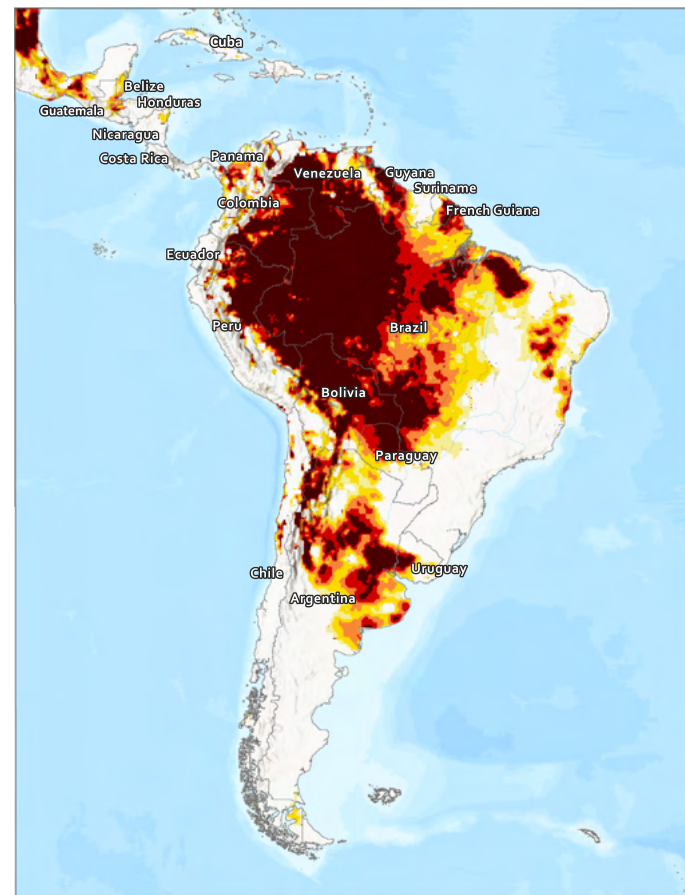
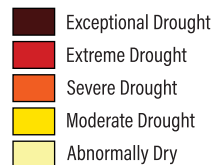
Medium-term drought (this page)

Areas in medium-term drought are those that have received less rainfall than usual over a three month span. Rainfed and small-scale irrigated agriculture and village-level water supplies are negatively impacted, as are grasslands and pastures.

Percentage of SOUTHCOM in medium-term (3 month) drought (as of October, SPEI)



Medium-term (3 month) drought (as of October 2023, SPEI)



Long-term drought (first page)

Areas in long-term drought are those that have received less rainfall than usual over a twelve-month span. Large-scale domestic, hydroelectric, and irrigation water supplies are negatively impacted, as are forests and other types of woody landcover.

Sources:

Brown, D., et al. (2023). MODIS Optical Global Water Intelligence (MOGWA1) Web Application User Guide. ERDC/CHL CHETN-XII-2. Vicksburg, MS: US Army Engineer Research and Development Center, Coastal and Hydraulics Laboratory. <http://dx.doi.org/10.21079/11681/46612>.

Casey, N. & Kraus, C., (2018, December 24). It Doesn't Matter if Ecuador Can Afford this Dam. China Still Gets Paid. New York Times. https://www.nytimes.com/2018/12/24/world/americas/ecuador-china-dam.html?unlocked_article_code=1.9Uw.43vo.Wlist2jrZWpj&smid=url-share

Energy Central. (2023, October 23). Major Brazilian hydroelectric power plant shut down due to drought. <https://energycentral.com/news/major-brazilian-hydroelectric-power-plant-shut-down-due-drought-0>

Farthing, L. (2016, November 25). 'We are in shock': historic Bolivia drought hammers homes and crops. The Guardian. <https://www.theguardian.com/global-development/2016/nov/25/bolivia-drought-water-rationing-crops>

Hicks, D. L., & Maldonado, B. (2015). Climate Change and Civil Unrest: Evidence from the El Niño Southern Oscillation. SSRN. <https://doi.org/10.2139/ssrn.2666703>

Global Water Security Center. (2022). SPEI. <https://h2o.aer.com/drought>

Kay, G., Dunstone, N. J., Smith, D. M., Betts, R. A., Cunningham, C., & Scaife, A. A. (2022). Assessing the chance of unprecedented dry conditions over North Brazil during El Niño events. Environmental Research Letters, 17(6). <https://doi.org/10.1088/1748-9326/ac6df9>

Kirtman, B. P., et al. (2014). The North American Multimodel Ensemble: Phase-1 Seasonal-to-Interannual Prediction; Phase-2 toward Developing Intraseasonal Prediction. Bulletin of the American Meteorological Society, 95(4), 585–601. <https://doi.org/10.1175/BAMS-D-12-00050.1>

Marina, D. (2023, April 13). Regions in Northern Peru, battered by rain, call strike against national government to protest neglect. Perú Reports. <https://perureports.com/regions-in-northern-peru-battered-by-rain-call-strike-against-national-government-to-protest-neglect/10097/>

Pacific Coastal and Marine Science Center. (2023, February 16). Federal Scientists Assess Unusual River-Erosion Disaster in Ecuadorian Amazon. USGS.

Silva, G. A. M. d., Drumond, A., & Ambrizzi, T. (2011). The impact of El Niño on South American summer climate during different phases of the Pacific Decadal Oscillation. Theoretical and Applied Climatology, 106(3-4), 307-319. <https://doi.org/10.1007/s00704-011-0427-7>

Soto, A.G.R., et al. (2021). Charting a New Regional Course of Action: The Complex Motivations and Costs of Central American Migration. World Food Programme.

Map Sources:

Esri, USGS, NOAA. Scale Not Given. "World Terrain Base". May, 27, 2020. https://server.arcgisonline.com/ArcGIS/rest/services/World_Terrain_Base/MapServer. (May, 15, 2023).

Sources: Esri, Airbus DS, USGS, NGA, NASA, CGIAR, N Robinson, NCEAS, NLS, OS, NMA, Geodastystyrelsen, Rijkswaterstaat, GSA, Geoland, FEMA, Intermap, and the GIS user community. "World Hillshade". February 10, 2022. https://services.arcgisonline.com/arcgis/rest/services/Elevation/World_Hillshade/MapServer. (May, 15, 2023).

Maps throughout this report were created using ArcGIS® software by Esri. ArcGIS® and ArcMap™ are the intellectual property of Esri and are used herein under license. Copyright © Esri. All rights reserved. For more information about Esri® software, please visit www.esri.com.